



Robertson Road, E16

£275,000

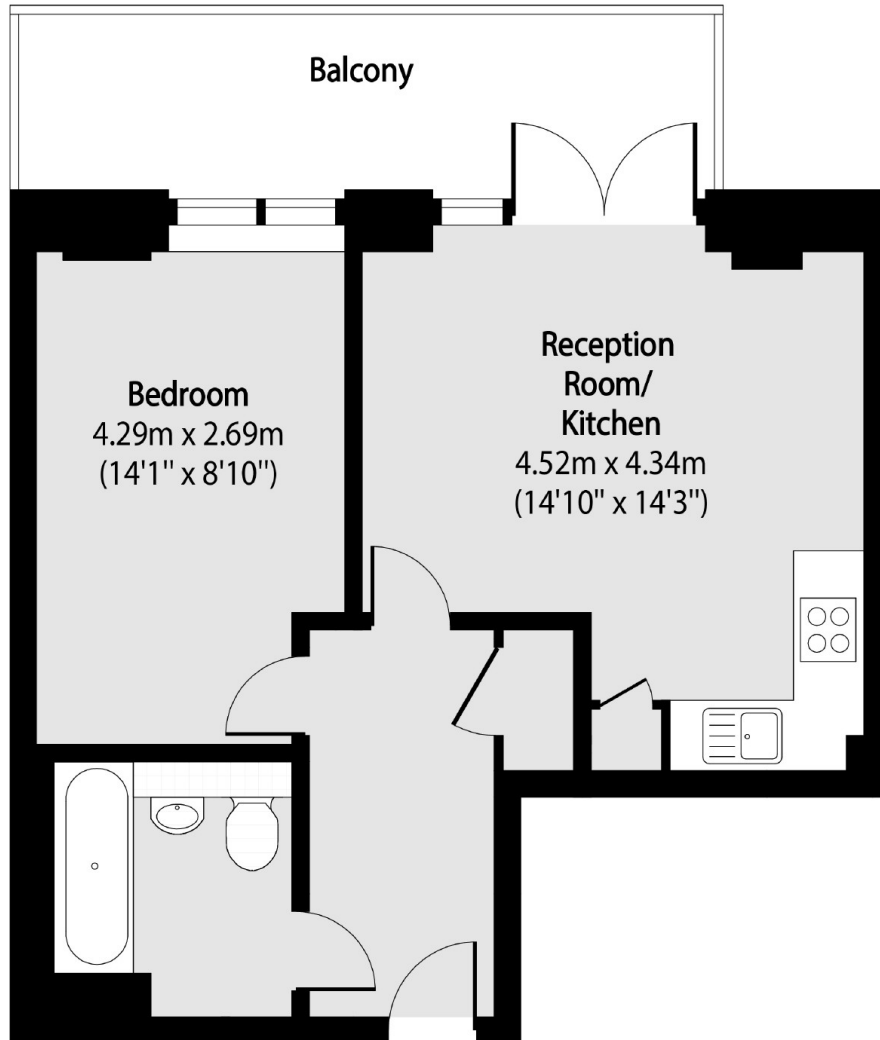
A one bedroom home located within Pandora Court offering 436 Square Feet of ample living presented in immaculate condition. The property includes a private balcony, modern kitchen as well as an abundance of light throughout.

Pandora Court is under a quarter of a mile from Canning Town Underground Station (Jubilee Line and the DLR), Custom House Station (DLR and Crossrail) and the Emirates Air Line provides a direct link to the O2 Greenwich Area and North Greenwich Tube Station.

Features

- 436 Square Feet
- One Bedroom
- Private Balcony
- Modern Throughout
- Chain Free
- E16 Location

Robertson Road, London, E16



Total area (approx): 40.50 sq m (436 sq. ft)

Balcony total area (approx): 9.10 sq m (98 sq. ft)