

Fairmont Avenue, E14

£1,500 Per week

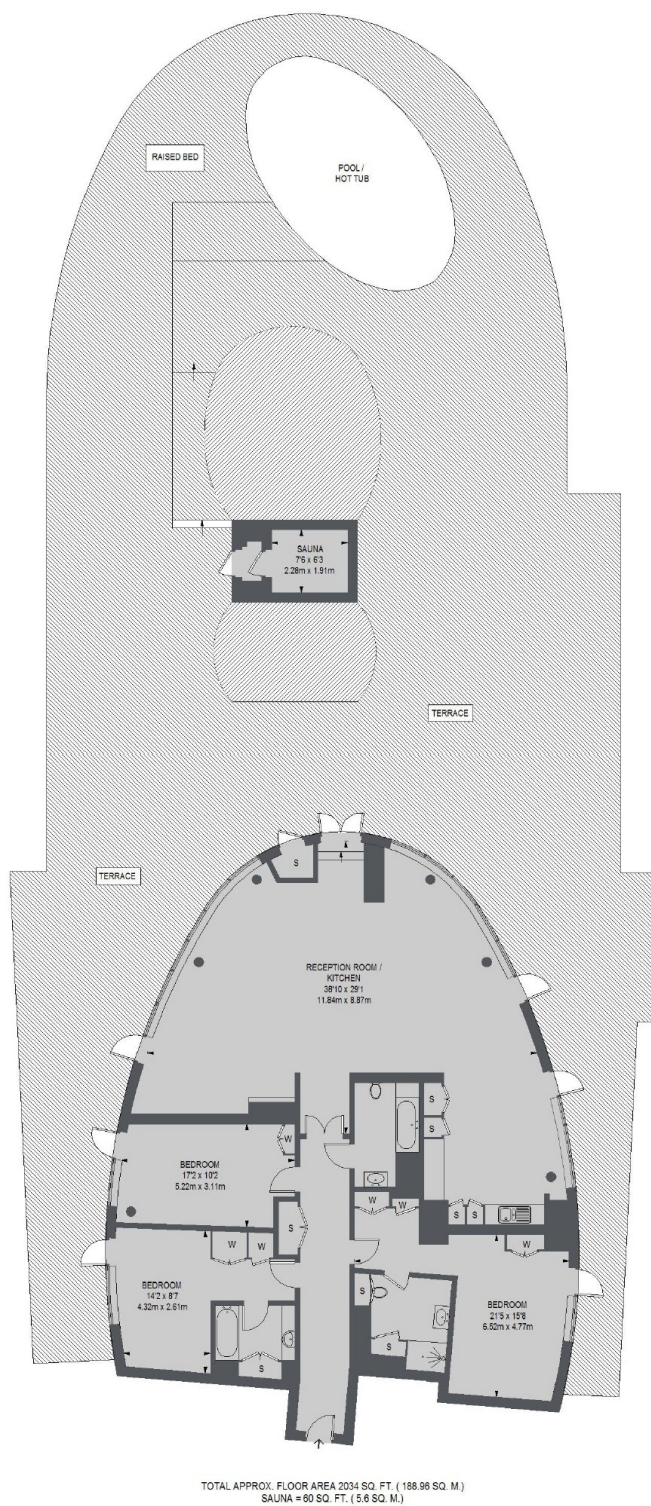
A rarely available three bedroom penthouse on the fifteenth floor of this superior development. This exceptional apartment offers a wrap round terrace, private sauna and breath taking views.

New Providence Wharf is walking distance into the centre of Canary Wharf which allows easy access to a number of popular restaurants.

Features

- Penthouse
- Three Bedrooms
- Three Bathrooms
- Wrap Around Balcony
- Roof Terrace
- Private Sauna

**Fairmont Avenue,
London, E14**



TOTAL APPROX. FLOOR AREA 2034 SQ. FT. (188.96 SQ. M.)
SAUNA = 60 SQ. FT. (5.6 SQ. M.)