



Dod Street, E14

£553 Per week

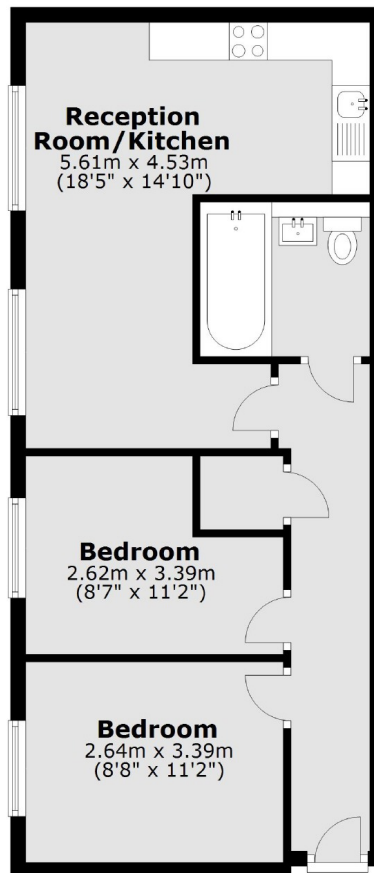
Offered to the market in immaculate condition is this two bedroom warehouse style apartment located in E14. Features to include high ceilings, large windows, modern kitchen and contemporary styled bathroom.

Trent Court is set within Tower Hamlets area there a great array of shops, bars and restaurants from Clyde Square (1.0 miles). Transport links include the Westferry Circus DLR (0.4 miles), Langdon Park DLR (0.6 miles) and Limehouse DLR (0.7 miles) which all provide good links to The City and Canary Wharf.

Features

- Warehouse Conversion
- Two Double Bedrooms
- High Ceilings
- First Floor
- E14 Location
- Sought After Development

Dod Street,
London, E14



Total area: approx. 50.0 sq. metres (538.0 sq. feet)

Dexters

Canary Wharf
39 Westferry Road
London
E14 8JH
Lettings
0207 517 1190

Energy Rating: . We aim to make our particulars both accurate and reliable. However they are not guaranteed; nor do they form part of an offer or contract. If you require clarification on any points then please contact us, especially if you're traveling some distance to view. Please note that appliances and heating systems have not been tested and therefore no warranties can be given as to their good working order.

 **RICS** | Regulated
Estate Agent
and Letting Agent

dexters.co.uk