



Charnwood Gardens, E14

£725,000

Welcome to this three bedroom home, located in the heart of the Isle of Dogs. Features to include 1,096 square feet of ample living space, private garden, garage and a driveway.

Charnwood Gardens is just 0.4 miles from Mudchute DLR station, offering great links into the City and Canary Wharf.

Features

1,096 Square Feet
Chain Free
Private Garden
Three Bedrooms
Garage
Parking

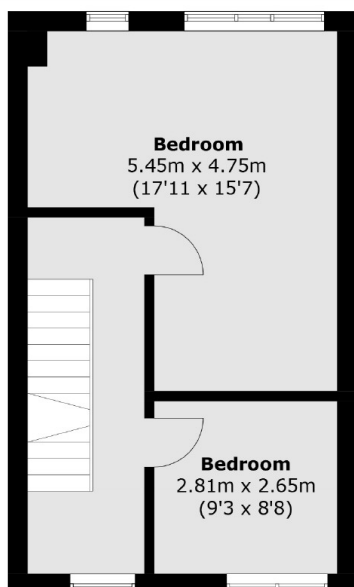


Charnwood Gardens, E14

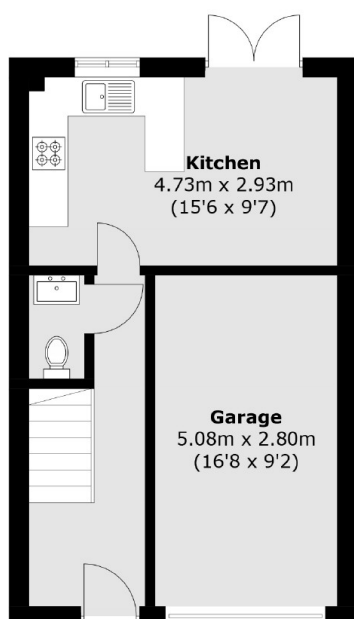
The house is beautifully light and airy, with ample outdoor space. It features three good-sized bedrooms spread across the top two floors, along with a separate cloakroom and a private garage on the ground floor. The property also includes an allocated parking space, adding to its convenience and appeal.



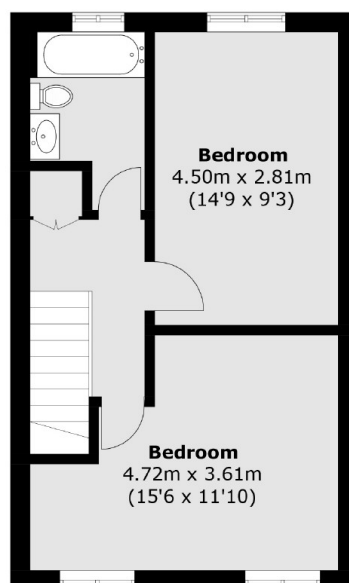
Charnwood Gardens, London, E14



First Floor



Ground Floor



Second Floor

Approx Internal Area: 101.9 sq. m (1,096.8 sq. ft)
Garage: 14.2 sq. m (152.8 sq. ft)
Total: 116.1 sq. m (1,249.6 sq. ft)