



## Fairmont Avenue, E14

### £500,000

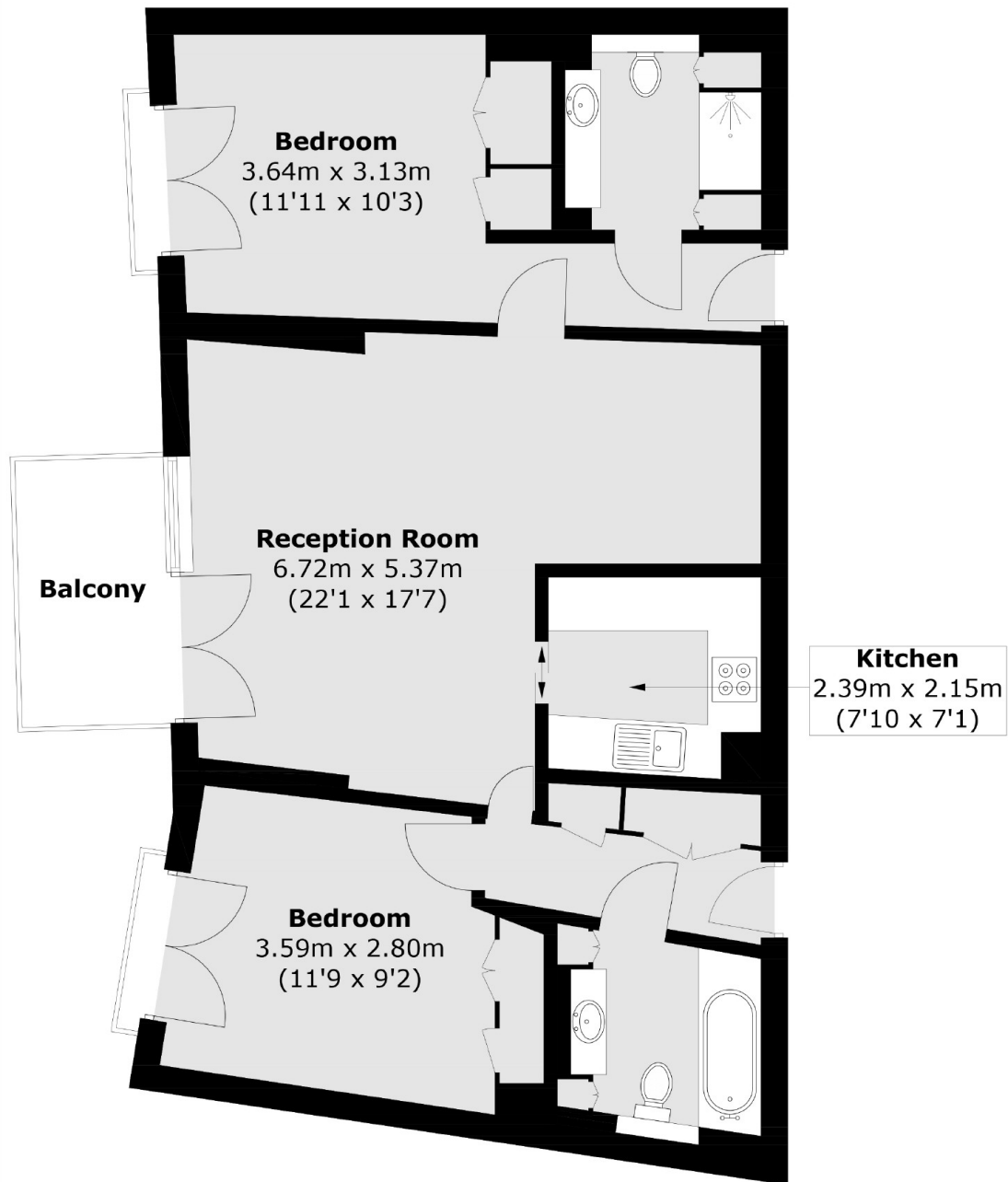
Offered to the market on a chain-free basis is this spacious two bedroom home located within New Providence Wharf. The property has a private balcony which over looks the river. Concierge services and residents leisure facilities are also offered.

New Providence Wharf has great transport links being under three quarters of a mile walk from Canary Wharf and there are three DLR stations within a third of a mile away.

### Features

- Chain Free
- Two double bedroom
- Residents Leisure Facilities
- River Views
- 976 Year Lease
- Concierge Facilities

# Fairmont Avenue, London, E14



Total area (approx.): 79.4 sq. m (854.7 sq. ft)  
Balcony : 5.0 sq. m (53.8 sq. ft)