



Hesperus Crescent, E14
£675,000

Dexters



Hesperus Crescent, E14

Nestled in a friendly and well-connected neighbourhood, this delightful three-bedroom terraced home offers additional features including permit parking, a re-fitted kitchen, and is being sold with no onward chain.

Mudchute DLR station is just a short walk from Hesperus Crescent, offering excellent transport links around the City. Outstanding schools near by.

Features

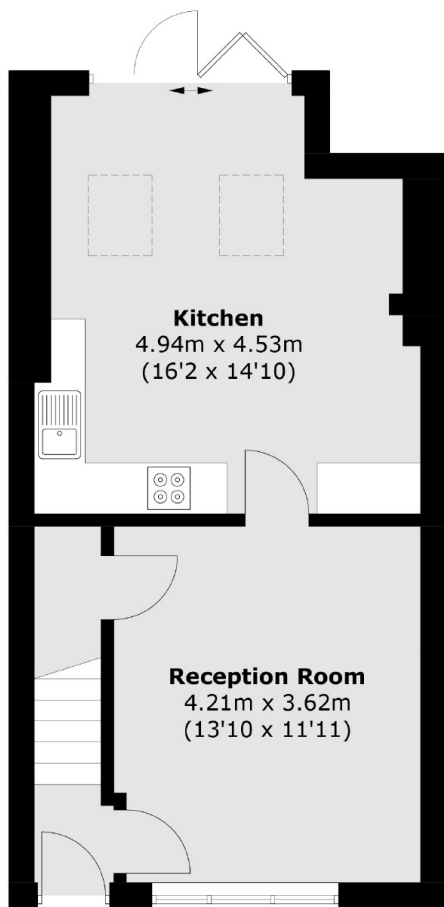
- Offers Over £700,000
- Freehold House
- Three Bedrooms
- Private Garden
- Permit Parking
- Re-Fitted Kitchen



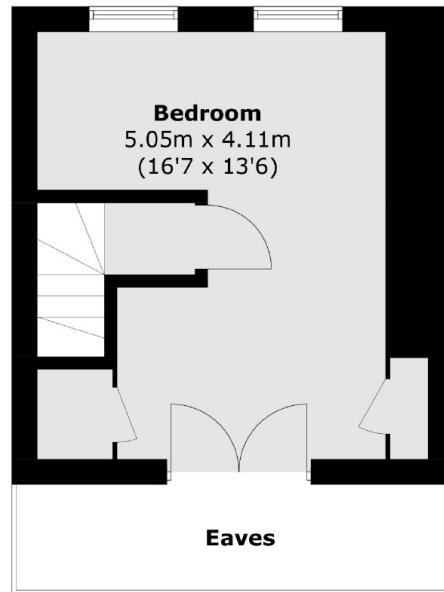




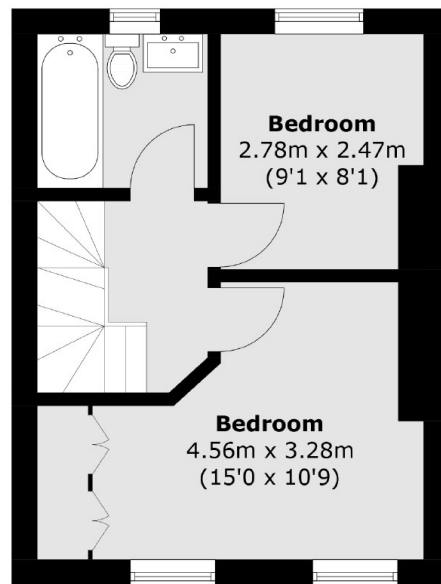
Hesperus Crescent, London, E14



Ground Floor



Second Floor



First Floor

Total area (approx.): 93.3 sq. m (1,004.2 sq. ft)
(Excluding Eaves)