



Holyrood Mews, E16

£550,000

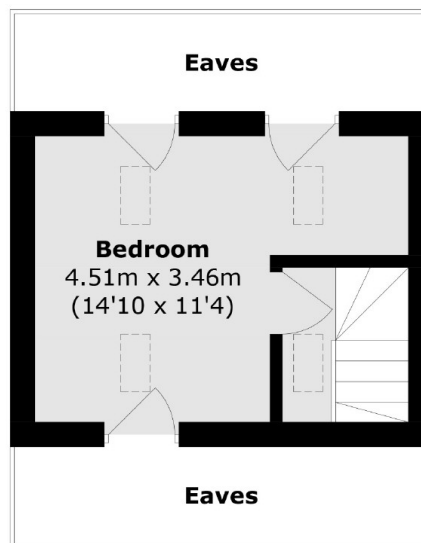
Welcome to this Beautifully presented three-bedroom home, spanning over 915 square feet internally. The heart of the home is a well-appointed living space, complemented by a modern kitchen and dining area, ideal for entertaining. The property also includes allocated parking, a private garden, and wooden flooring throughout.

Holyrood Mews is just 0.5 miles from West Silvertown DLR station, offering excellent links to Canary Wharf and the City. In addition, the ExCeL Centre is just a short walk away, hosting a wide variety of events each month.

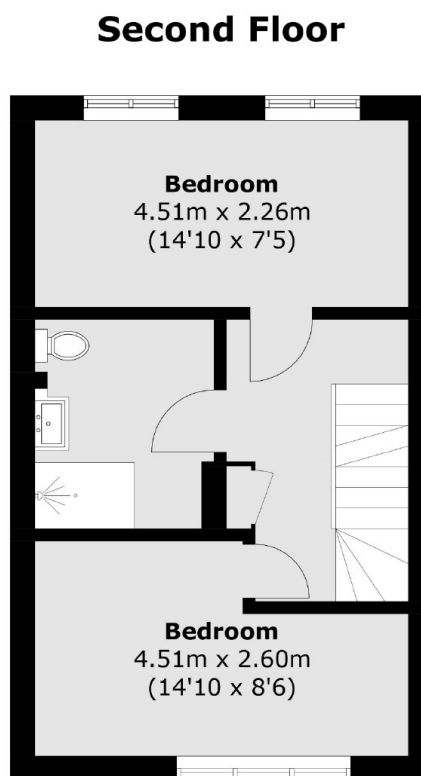
Features

- Three Bedrooms
- 916 Square feet
- Allocated Parking
- Private Garden
- Beautifully Presented
- Wooden Flooring Throughout

Holyrood Mews, London, E16



Ground Floor



First Floor

Total area (approx.): 85.1 sq. m (916.0 sq. ft)
(Excluding Eaves)