



## Langbourne Place, E14

£576 Per week

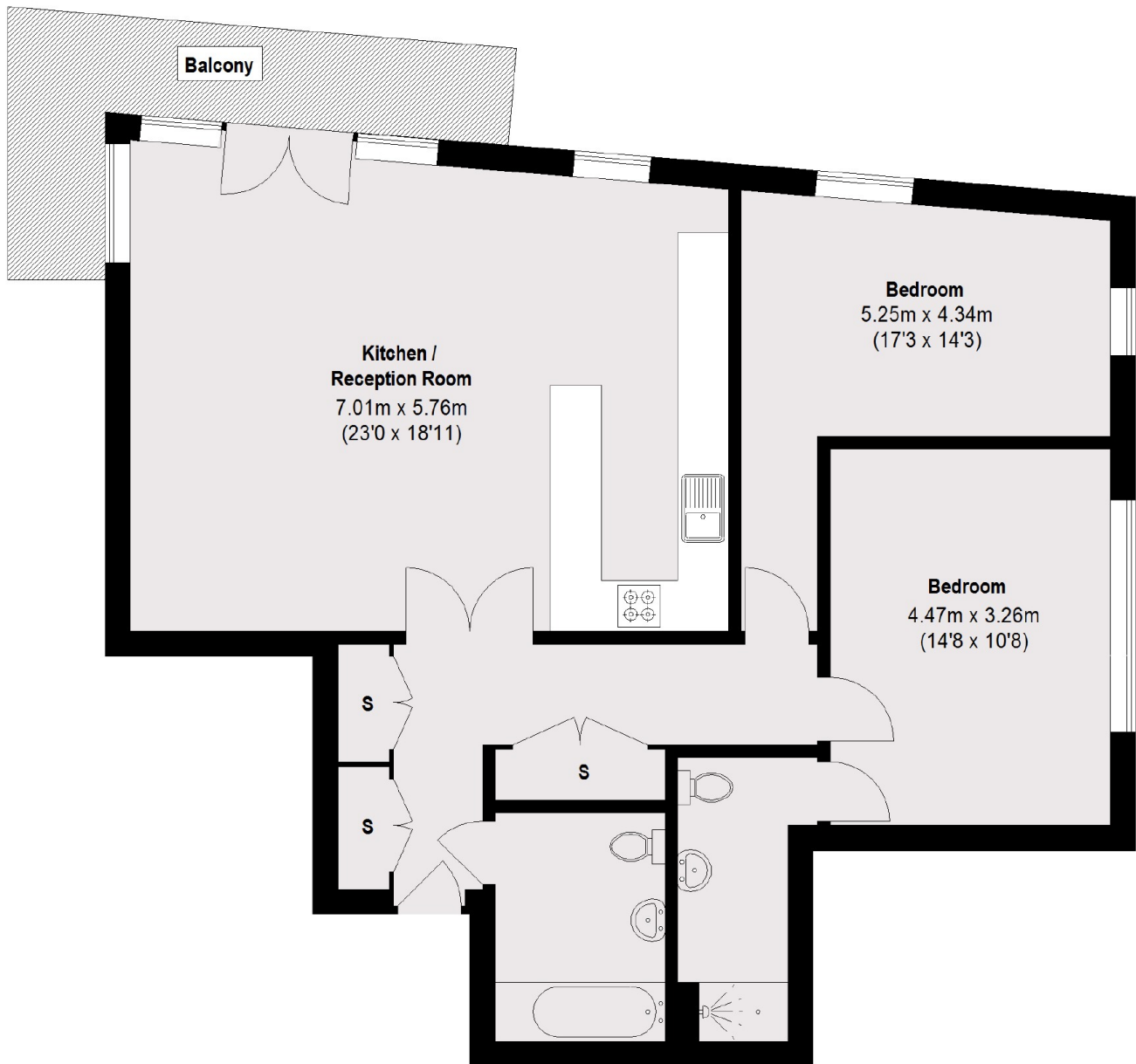
A large two bedroom apartment on the third floor of this secure, gated development. This apartment has wooden flooring and a private balcony with partial river views.

Langbourne Place is private gated development moments from the The Docklands Sailing Centre and the amenities of Canary Wharf.

### Features

- Two Bedrooms
- Two Bathrooms
- Third Floor
- Large Kitchen
- Private Balcony
- Secure Parking

# Langbourne Place, London, E14



## First Floor

Total area (approx.): 93.11 sq. m (1002 sq. ft)  
Balcony: 9.19 sq. m (99 sq. ft)