



Indescon Square, E14

£800,000

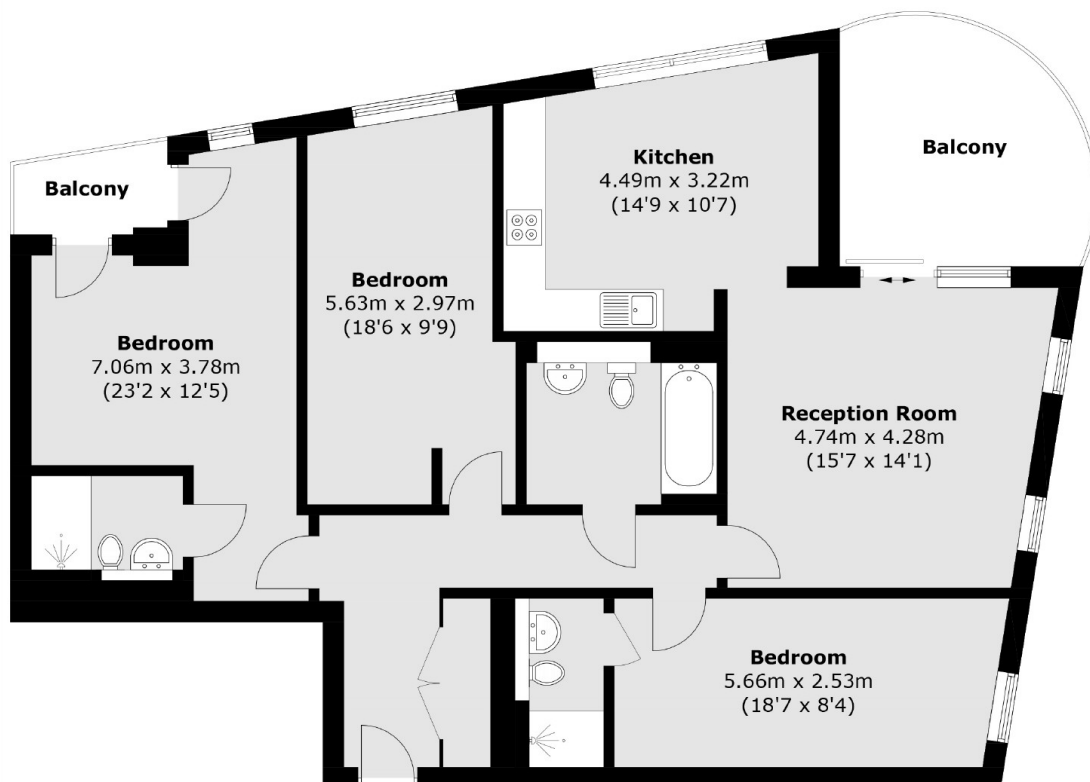
This modern three-bedroom apartment at 1302 Indescon Square offers a stylish and convenient living space in the heart of Canary Wharf. Featuring an open-plan living area with large windows, two parking spaces, a fully equipped kitchen, and three spacious bedrooms, this property is designed for both comfort and practicality.

Indescon Square is in the heart of South Quay, just moments from Millharbour Dock and a selection of shops, bars, and restaurants in Canary Wharf. The Jubilee Line and Crossrail are also accessible within Canary Wharf, both providing excellent links to the City.

Features

- Large Terrace
- Two Bathrooms
- Three Bedrooms
- No Onward Chain
- Two Parking spaces
- Concierge Services
- 1193.7 Square Feet

Indescon Square, London, E14



Total area (approx.): 110.9 sq. m (1,193.7 sq. ft)
Balcony area: 14.0 sq. m (150.7 sq. ft)

Dexters

Canary Wharf
39 Westferry Road
London
E14 8JH
Sales
020 7517 1199

Energy Rating: B. We aim to make our particulars both accurate and reliable. However they are not guaranteed; nor do they form part of an offer or contract. If you require clarification on any points then please contact us, especially if you're traveling some distance to view. Please note that appliances and heating systems have not been tested and therefore no warranties can be given as to their good working order.

 **RICS** | Regulated
Estate Agent
and Letting Agent

[dexters.co.uk](https://www.dexters.co.uk)