

Baltimore Wharf, E14

£1,000,000

Dexters



Baltimore Wharf, E14

A large duplex apartment with unrivaled dock and Canary wharf views. Located in the sought-after Baltimore Wharf development, this home offers an abundance of natural light through its impressive floor-to-ceiling windows showcasing a double height reception room. The home also includes long lease, allocated parking, 24 hour concierge, residents leisure facilities with modern gym and 25 meter swimming pool.

Baltimore Wharf is one of the closest residential developments to Canary Wharf and offers homeowners a balance of luxury living with modern facilities. The accommodation is laid out over two floors and comprises a hallway with access to the main reception area, a cloakroom, and stairs leading to the second floor. The reception room boasts a double-height living area and a kitchen/dining area with access to the double-width terrace. The terrace offers stunning views of the dock and Canary Wharf. On the second floor, you will find both bedrooms, each with en-suites and Juliet balconies, as well as the benefit of a dressing area off the main bedroom.

Baltimore Wharf is a short walk from Crossharbour DLR and offers easy access to the local amenities of the area and Canary Wharf. The Jubilee and Elizabeth lines are also available, both providing excellent links to all parts of the City.

Features

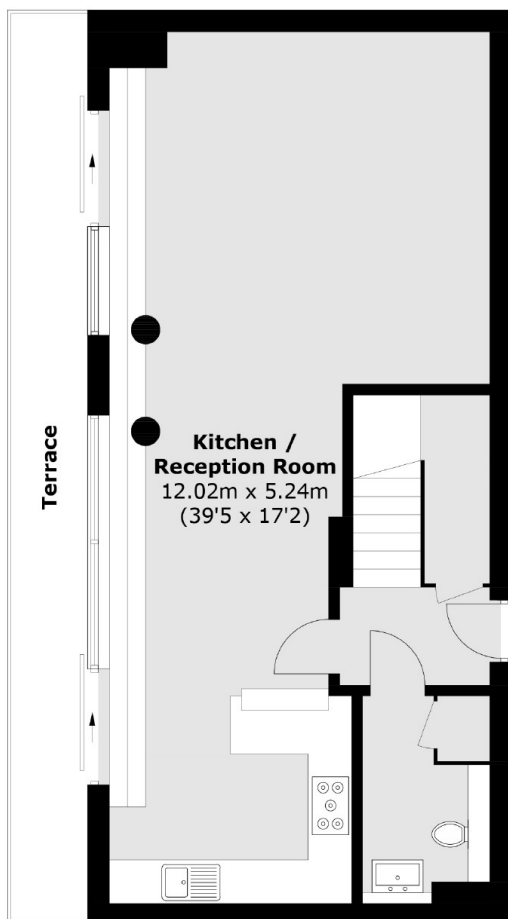
- 1,139 Square Feet
- Long Lease
- Allocated Parking
- 24 Hour Concierge
- Private Double Width Terrace
- Residents Leisure Facilities



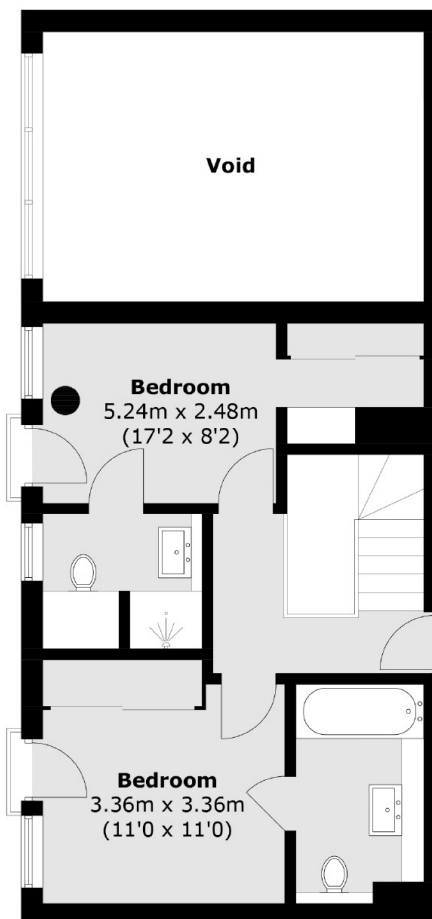




Baltimore Wharf, London, E14



Eleventh Floor



Twelfth Floor

Total area (approx.): 105.9 sq. m (1,139.9 sq. ft)
(Excluding Void)

Terrace area (approx.): 13.1 sq. m (141.0 sq. ft)