



Lookout Lane, E14

£425,000

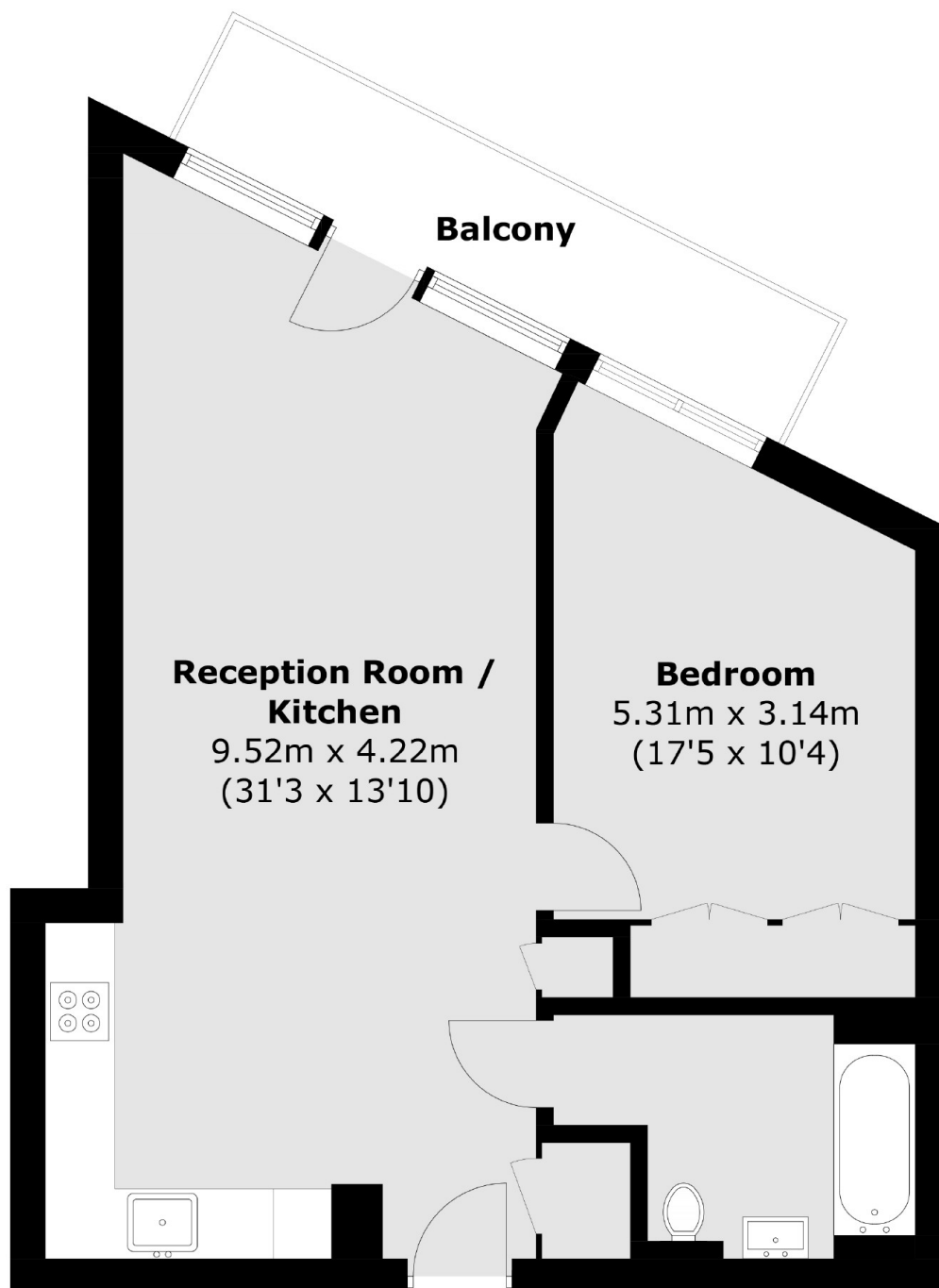
A stylish one bedroom apartment in the highly sought after London City Island Development. The apartment comprises of an open plan living space with integrated kitchen and access to a private balcony, spacious double bedroom with built-in wardrobes and large chic bathroom suite.

All residents of London City Island benefit from excellent amenities, including a 24-hour concierge, gym, spa, treatment rooms, screening room, pools, and gardens. The development is 0.25 miles from Canning Town Tube Station, which offers excellent links to the City and Canary Wharf.

Features

- Private Balcony
- Residents Leisure Facilities
- Concierge Service
- Open Plan Reception
- 900 Plus Year Lease
- No Onward Chain

Lookout Lane, London, E14



Total area (approx.): 55.4 sq. m (596.3 sq. ft)
Balcony: 6.7 sq. m (72.1 sq. ft)

Dexters

Canary Wharf
39 Westferry Road
London
E14 8JH
Sales
020 7517 1199

Energy Rating: - We aim to make our particulars both accurate and reliable. However they are not guaranteed; nor do they form part of an offer or contract. If you require clarification on any points then please contact us, especially if you're traveling some distance to view. Please note that appliances and heating systems have not been tested and therefore no warranties can be given as to their good working order.

 **RICS** | Regulated
Estate Agent
and Letting Agent

dexters.co.uk