



Fairmont Avenue, E14

£300,000

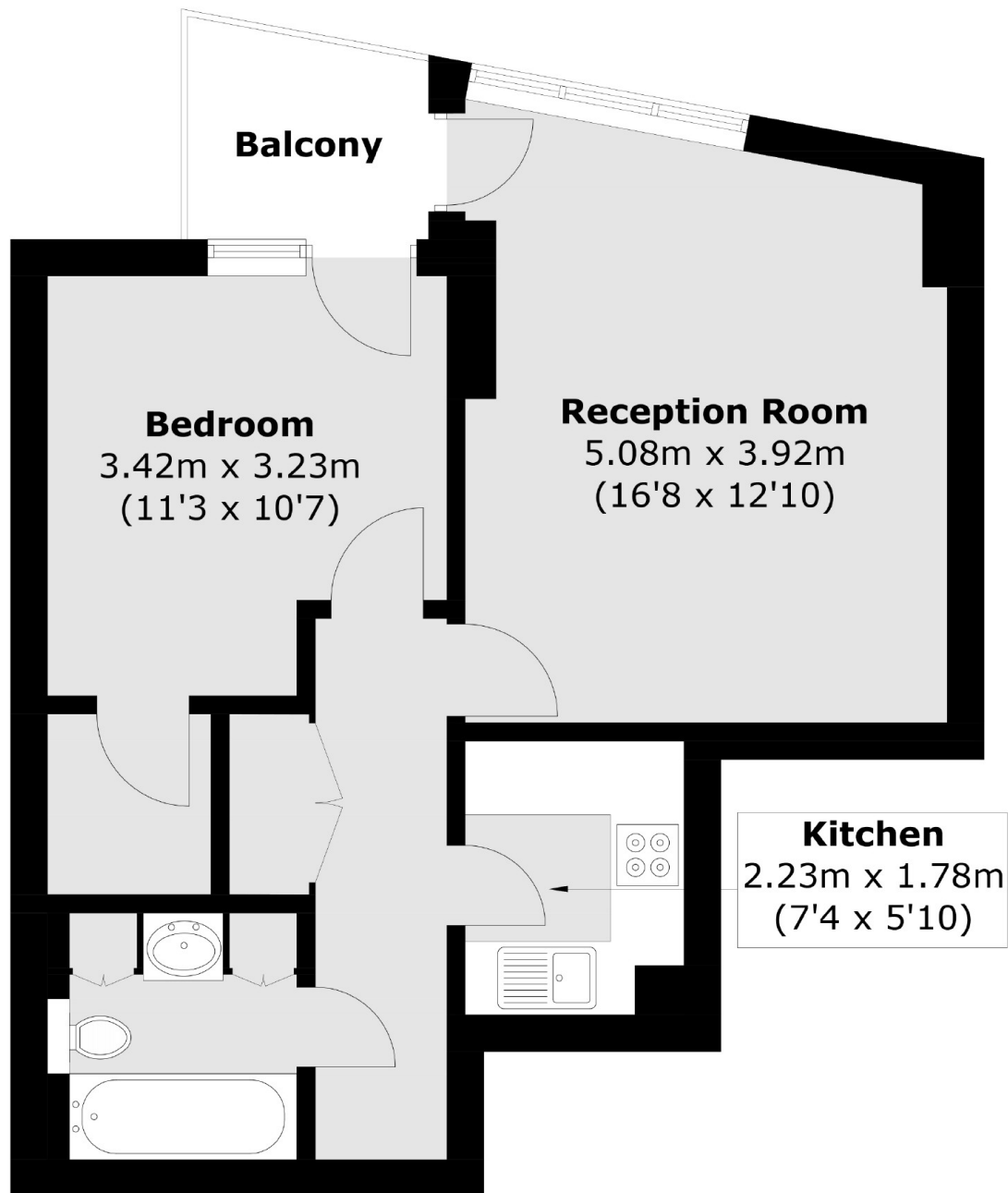
Offered to the market on a chain free basis is this one bedroom home located within New Providence Wharf. The property has a private balcony, residents leisure facilities and concierge service.

New Providence Wharf has great transport links being under three quarters of a mile walk from Canary Wharf and there are three DLR stations within a third of a mile away.

Features

- 977 Year Lease
- Concierge Service
- Residents Leisure Facilities
- No Parking
- Service Charge: £1919.56
- Council Tax Band: E

Fairmont Avenue,
London, E14



Total area (approx.): 47.3 sq. m (509.1 sq. ft)
Balcony area (approx.): 3.2 sq. m (34.4 sq. ft)

Dexters

Canary Wharf
39 Westferry Road
London
E14 8JH
Sales
020 7517 1199

Energy Rating: C. We aim to make our particulars both accurate and reliable. However they are not guaranteed; nor do they form part of an offer or contract. If you require clarification on any points then please contact us, especially if you're traveling some distance to view. Please note that appliances and heating systems have not been tested and therefore no warranties can be given as to their good working order.

 **RICS** | Regulated
Estate Agent
and Letting Agent

dexters.co.uk