



## Leerdam Drive, E14

### £650,000

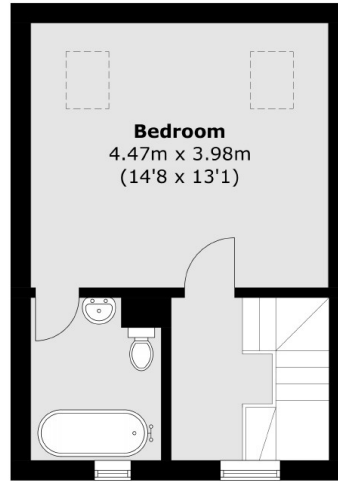
A three-bedroom townhouse in need of modernisation, arranged over three floors and located on the sought-after Leerdam Drive. The property includes outside space with water views, wooden flooring, and resident parking.

Leerdam Drive is a private road adjacent to the Thames River, close to Mudchute Park and Crossharbour DLR Station, both of which offer good links to the City and Canary Wharf. The property is also a quarter of a mile from Canary Wharf College and the ASDA supermarket.

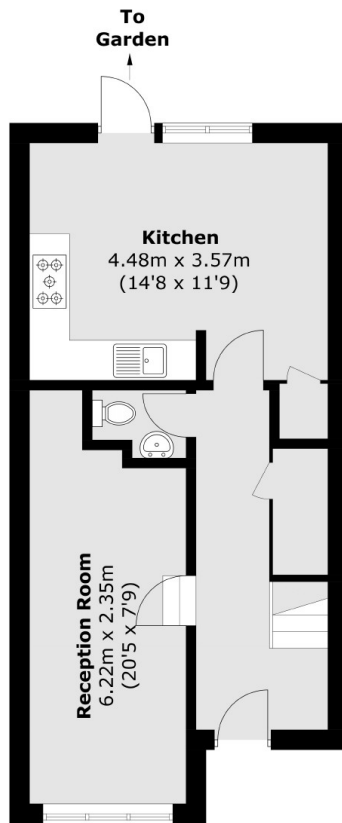
### Features

- 3 double bedrooms
- Private road
- Chain free
- Freehold
- Resident parking available
- Transport links to Canary Wharf

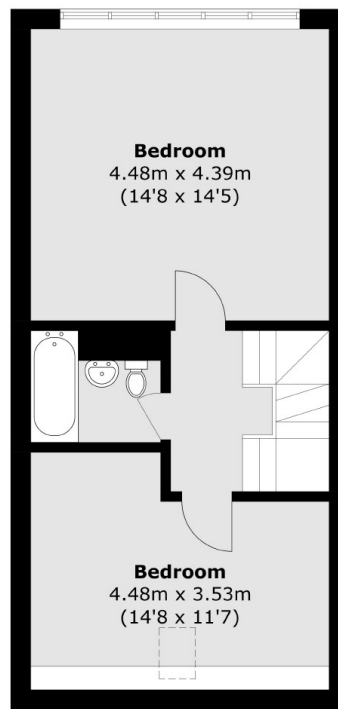
# Leerdam Drive, London, E14



**Second Floor**



**Ground Floor**



**First Floor**

Total area (approx.): 116.4 sq. m (1,252.9 sq. ft)