



## Victoria Road, RM1

### £325,000

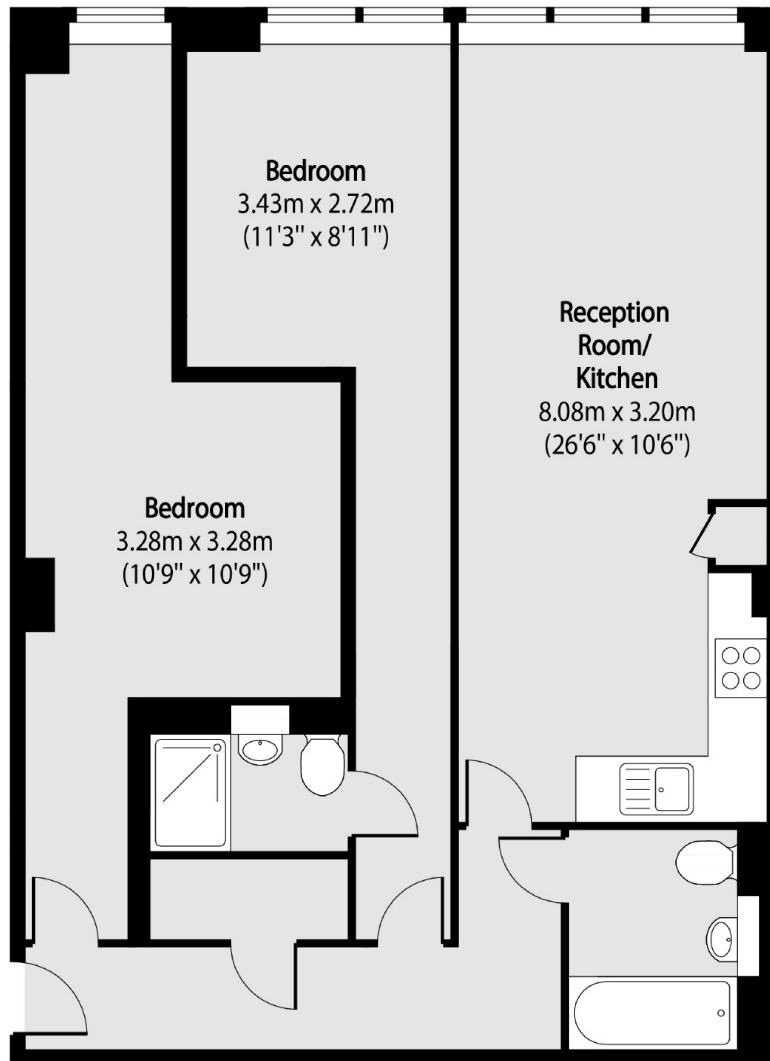
A two bedroom apartment located in Portman House. The property has an open plan living space with integrated appliances, hardwood floors throughout and a good sized bathroom.

Just a short walk from Romford station with excellent links to Victoria as well as the local amenities on Romford High Street.

### Features

- Cash Buyers Only
- Two Double Bedrooms
- Long Lease
- 876 Square Foot
- Integrated Appliances
- Chain Free

# Victoria Road, Romford, RM1



Total area (approx): 81.38 sq m (876 sq. ft)