



Old Bellgate Place, E14
£875,000

Dexters



Old Bellgate Place, E14

Offering flexible accommodation across three floors is this four bedroom family home with over 1,300 sq.ft of ample living space. The property has re-fitted bathrooms, a re-fitted kitchen, private rear garden and allocated parking.

Old Bellgate Place has a wealth of transport links including nearby Canary Wharf, Cross Harbour & Mudchute DLR. Additionally, Docklands Sailing Centre and Greenwich foot tunnel are also within close proximity

Features

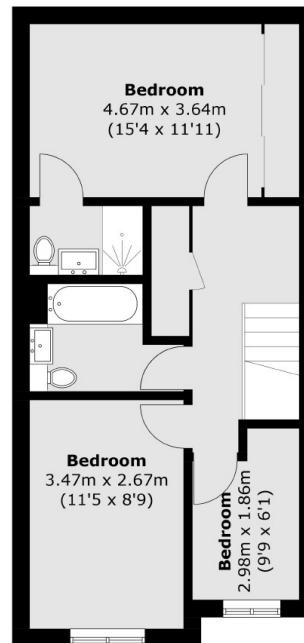
- Four Bedrooms
- Over 1,300 Sq.ft
- Gated Riverside Development
- Town House
- Private Allocated Parking
- Private Rear Garden



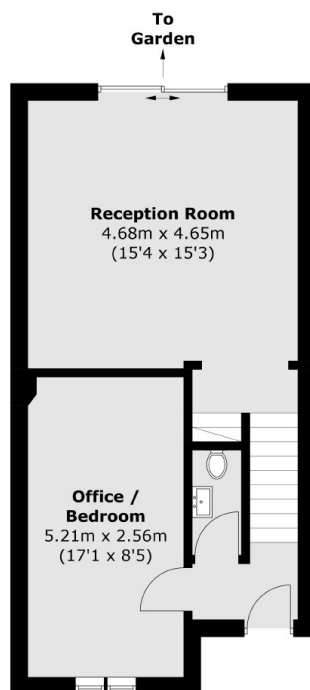




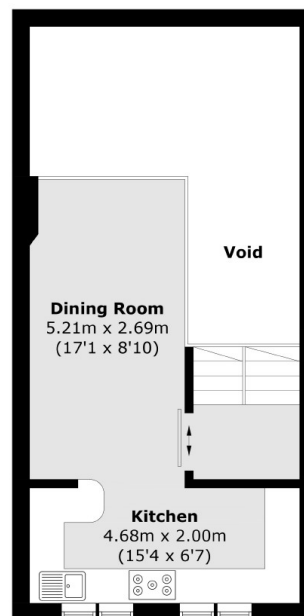
Old Bellgate Place, London, E14



First Floor



Ground Floor



Mezzanine

Total area (approx.): 121.9 sq. m (1,312.1 sq. ft)
(Excluding Void)