



## Baltimore Wharf, E14

£500 Per week

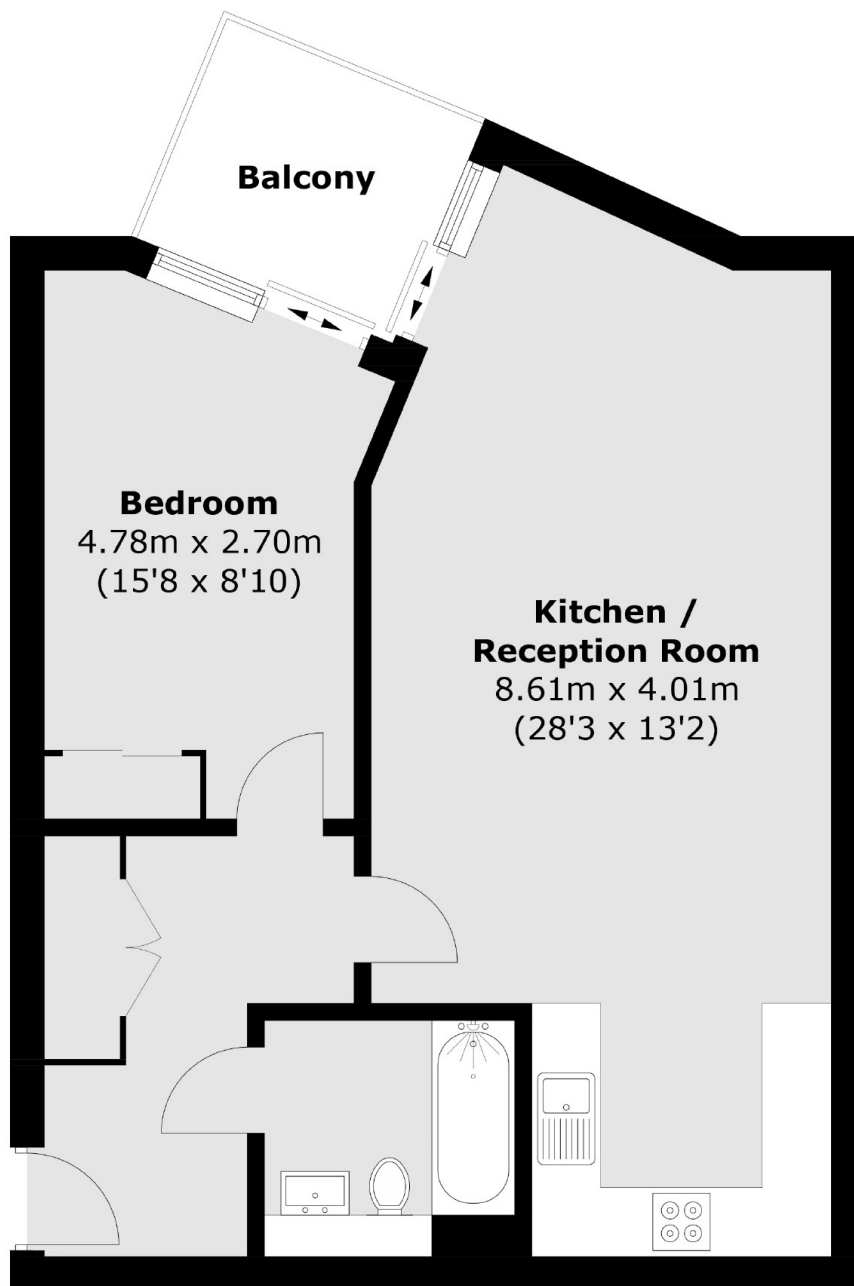
A one bedroom home located in the sought after Baltimore Wharf Development. The property includes a private balcony, open plan reception, modern kitchen, residents leisure facilities and concierge service.

Baltimore Wharf is one of Londons most stunning and modern developments. The development is home to an established growing community of people and is no more than five minutes away from Canary Wharf located by the river as well as near shops, restaurants and bars. It is also walking distance from Mudchute park.

### Features

- One Bedroom
- Private Balcony
- Water Views
- Residents Leisure Facilities
- Concierge Service
- 636 Sq.Ft

# Baltimore Wharf, London, E14



## Fifth Floor

Total area (approx.): 59.1 sq. m (636.1 sq. ft)  
Balcony area: 5.0 sq. m (53.8 sq. ft)