

Hammersley Road, E16

£375,000

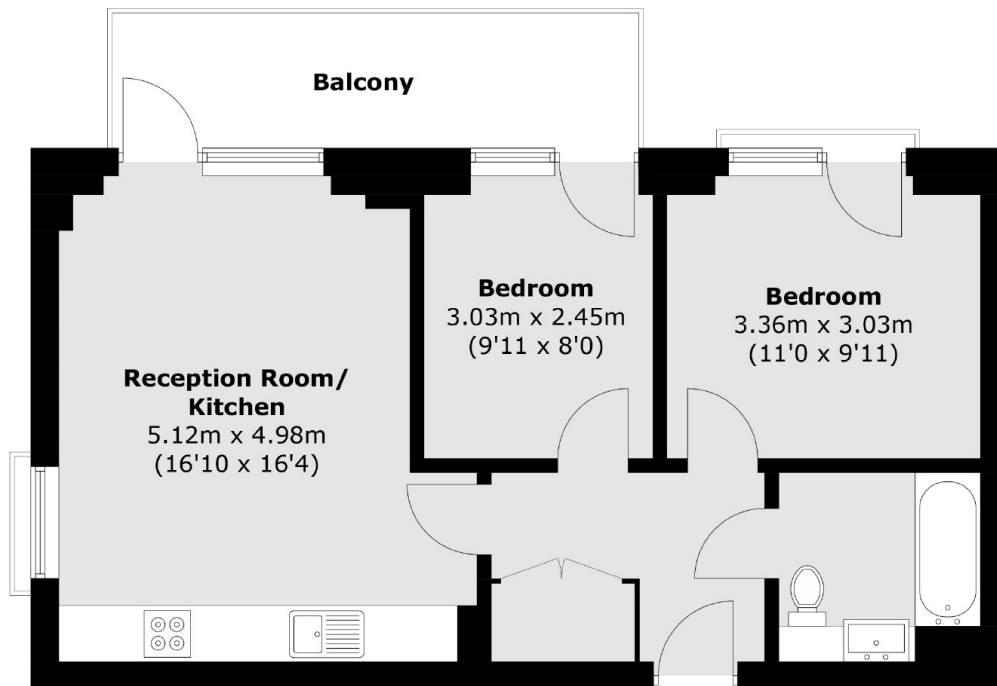
A two bedroom home located within Callisto Court with a private balcony. The property is in modern condition throughout and is being sold on a chain free basis.

Callisto Court is under a quarter of a mile from Canning Town Underground Station (Jubilee Line and the DLR), Custom House Station (DLR and Crossrail) and the Emirates Air Line provides a direct link to the O2 Greenwich Area and North Greenwich Tube Station.

Features

- 558 Sq.Ft
- Two Bedrooms
- Private Balcony
- Modern Throughout
- Chain Free
- Close To Tube Station

Hammersley Road, London, E16



Total area (approx.): 51.9 sq. m (558.6 sq. ft)
Balcony: 8.1 sq. m (87.2 sq. ft)