



## Fairmont Avenue, E14

£650,000

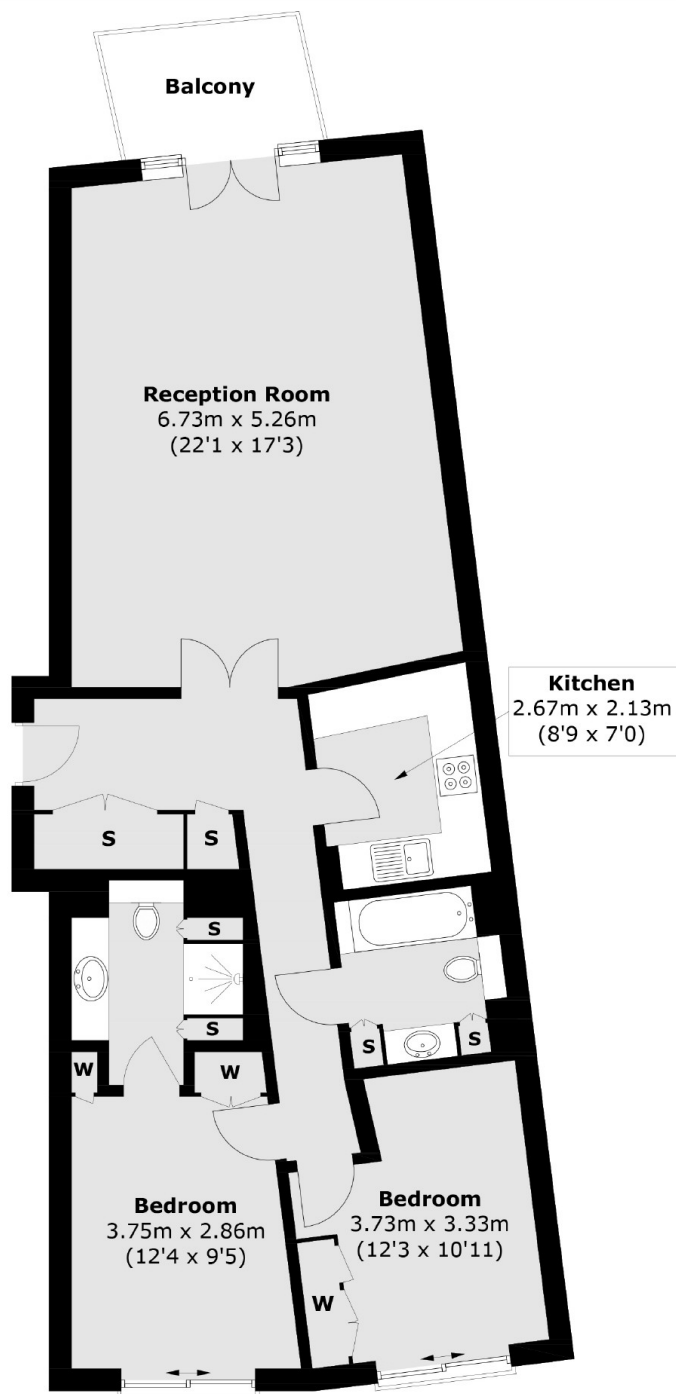
Two double bedroom riverside apartment with a separate kitchen, valet parking and a balcony with views over the River Thames. Residents also benefit from private New Providence Wharf gardens.

New Providence Wharf has great transport links being under three quarters of a mile walk from Canary Wharf and there are three DLR stations within a third of a mile away.

### Features

- Two Double Bedrooms
- Two Bathrooms
- River Views
- Private Parking
- Gym and Pool
- 24 Hour Concierge

# Fairmont Avenue, London, E14



Total area (approx.): 89 sq. m (957.9 sq. ft)  
Balcony area: 4.5 sq. m (48.4 sq. ft)