



Wards Place, E14

£650,000

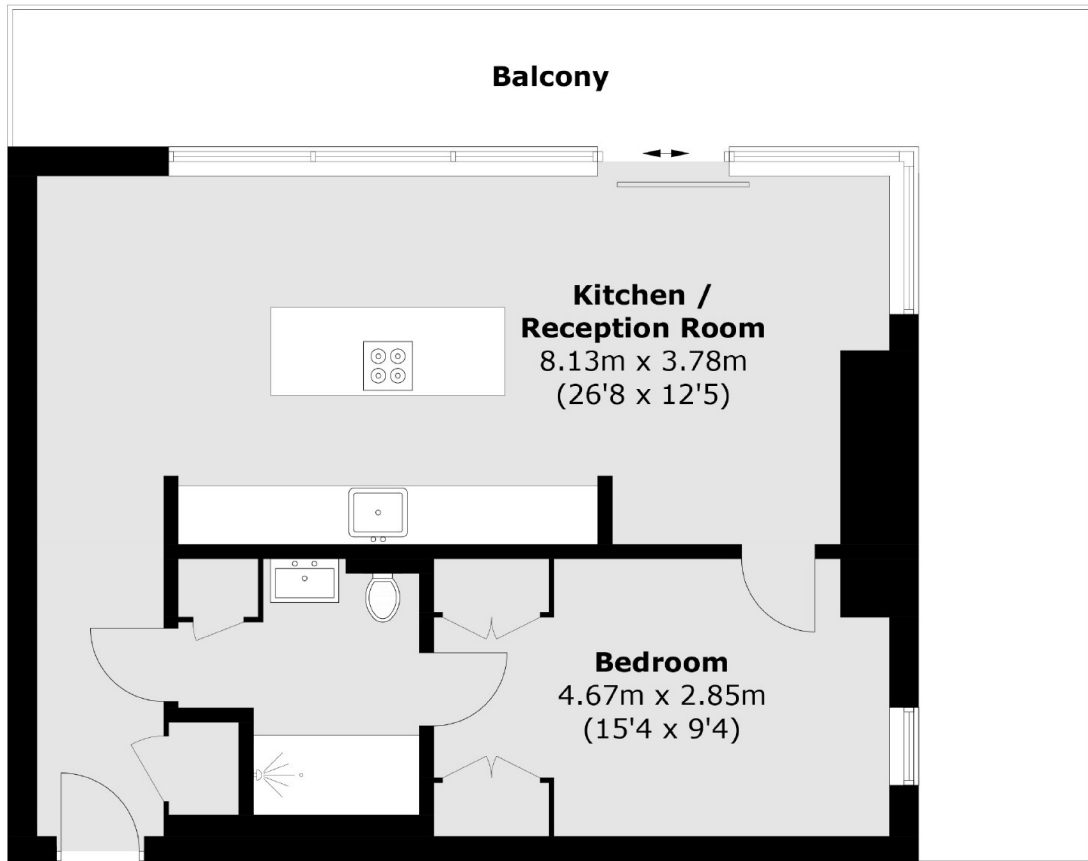
A one bedroom home located with the sought after Bagshaw Building offered to the market on a chain free basis. The property features a wraparound balcony, Canary Wharf and Dock views, residents leisure facilities and concierge service.

The Wardian is within walking distance of the shops, bars and restaurants of Canary Wharf. Many transport connections can be also be reached by foot in just few minutes. South Quay, Canary Wharf Underground, Heron Quay (DLR), Canary Wharf Bus (south), and the Crossrail.

Features

626 Sq.Ft
Private Wraparound Balcony
Eight Floor
Canary Wharf & Dock Views
Residents Leisure Facilities
No Onward Chain

Wards Place, London, E14



Total area (approx.): 58.2 sq. m (626.5 sq. ft)
Balcony: 28.5 sq. m (306.8 sq. ft)