



Fairmont Avenue, E14

£646 Per week

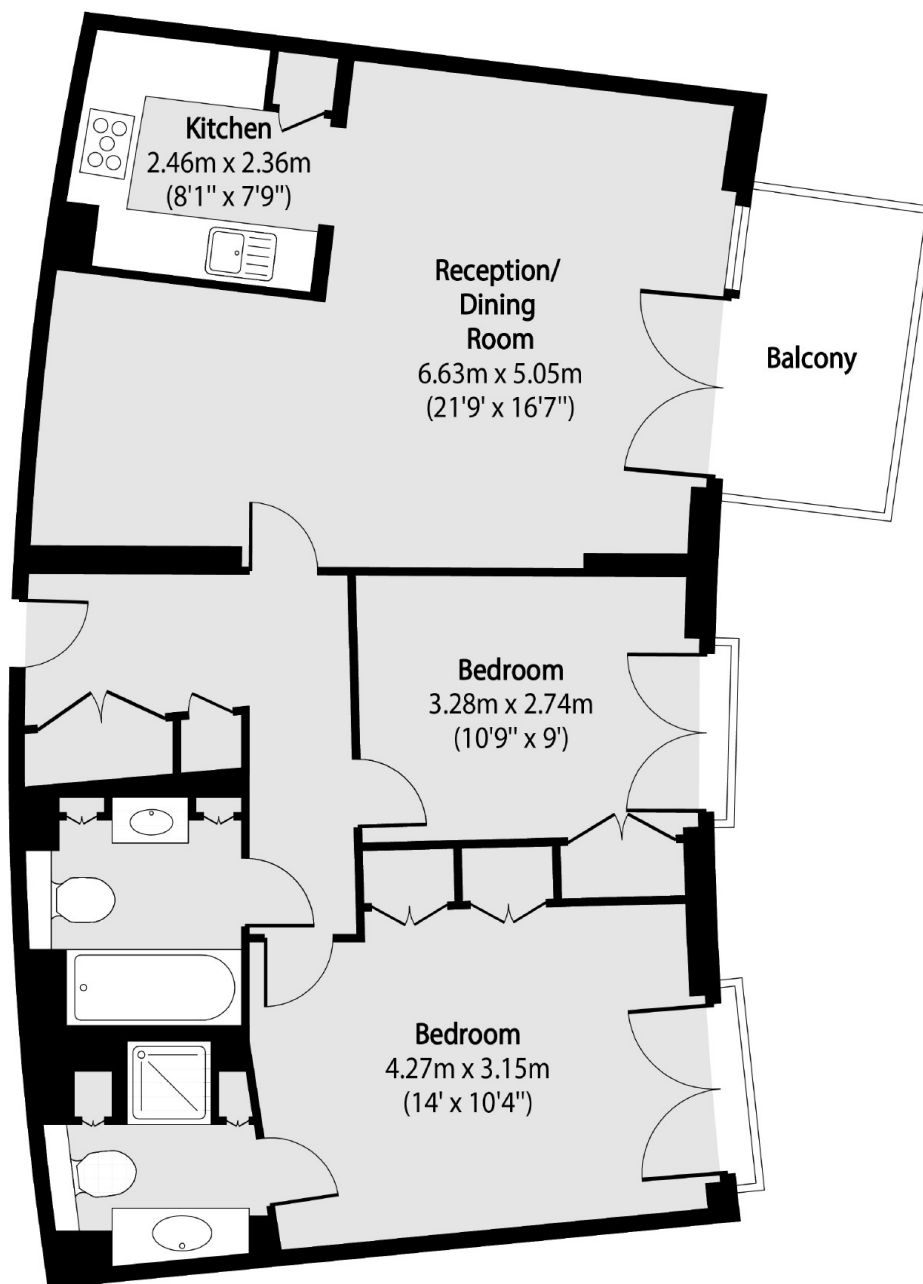
An 11th floor two bedroom two bathroom apartment with direct river views. The apartment is in immaculate condition throughout and benefits from wood flooring, built-in storage, a private balcony and residents facilities.

New Providence Wharf is situated a short walk from many popular restaurants including Hawksmoor and Dishoom.

Features

- Two Bedrooms
- Two Bathrooms
- 11th Floor
- River Views
- Private Balcony
- Parking by Negotiation

Fairmont Avenue, London, E14



Total area (approx): 78.13 sq m (841 sq. ft)

Balcony total area (approx): 5.85 sq m (63 sq. ft)