



## Fairmont Avenue, E14

£1,384 Per week

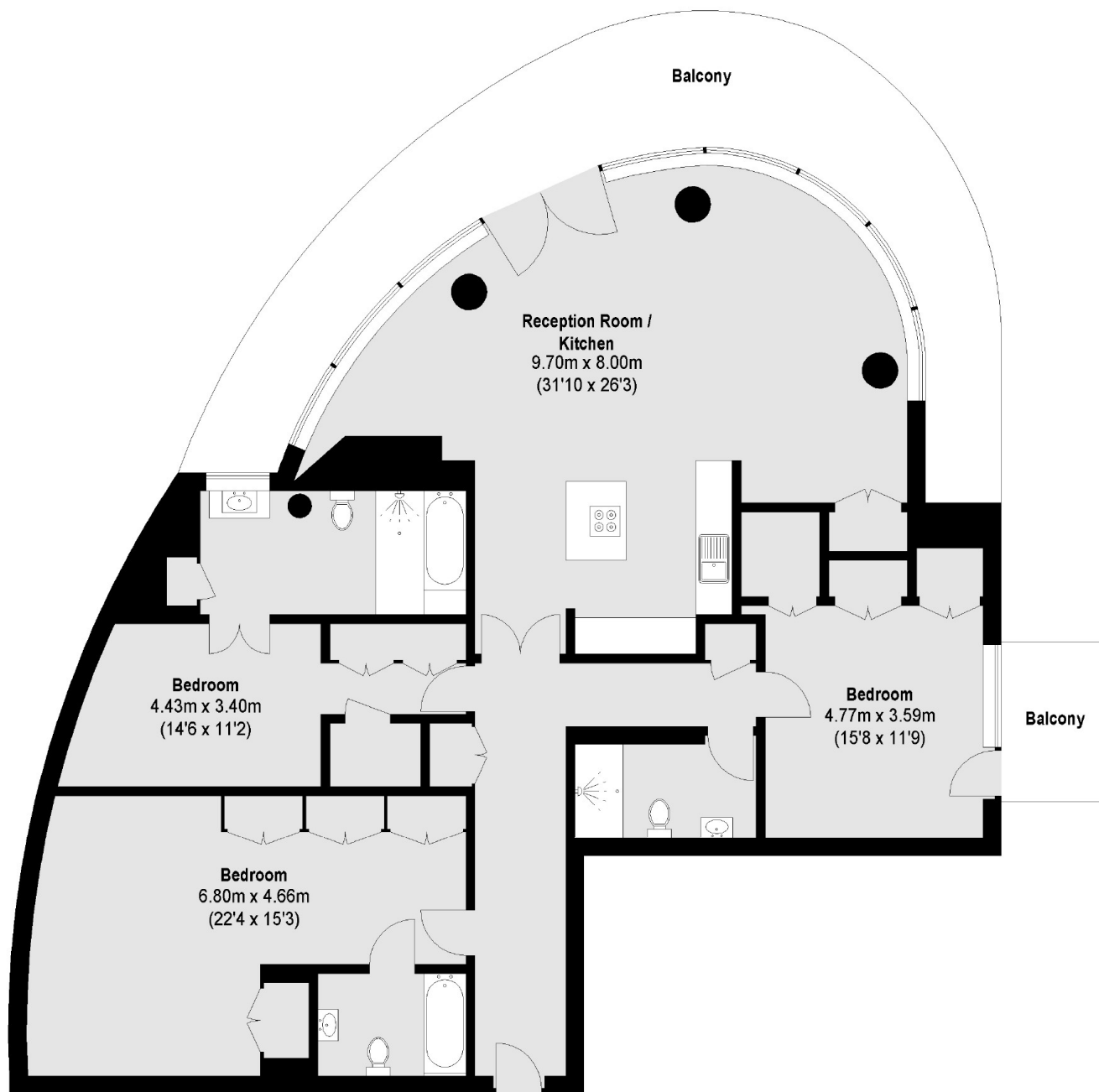
Beautifully refurbished three bedroom apartment in New Providence Wharf with direct river views in all rooms and a private wrap around balcony. The apartment also benefits from secure valet parking and on site gym with swimming pool and spa facilities.

Walking distance to Blackwall DLR and less than half a mile from Canary Wharf shops, bars and restaurants.

### Features

- Three Double Bedrooms
- Three Bathrooms
- Private Balcony
- Refurbished
- Valet Parking
- On Site Gym and Spa

# Fairmont Avenue, London, E14



## Fourth Floor

Total area (approx.): 160.25 sq. m (1725 sq. ft)  
Balconies: 39.0 sq. m (420 sq. ft)