

## Wards Place, E14

£1,300,000

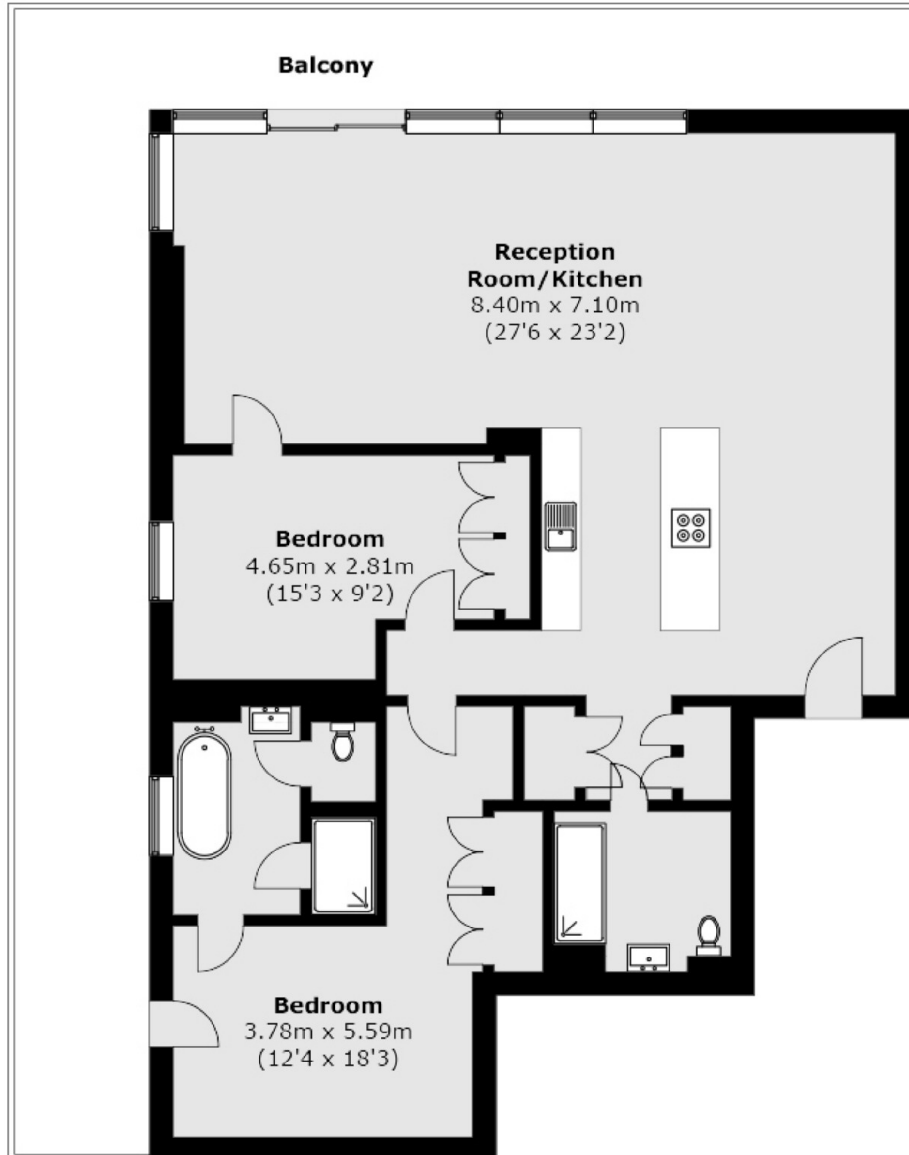
A modern two bedroom two bathroom apartment in the popular Wards Place development with views of the river and Canary Wharf. The property is finished to a high specification and residents benefit from a gym, pool, spa, rooftop bar and concierge service. There is parking included as well as the property being offered with the furnishings.

Located just a few moments from Canary Wharf which provides access to Canary Wharf Underground / DLR / Crossrail (Elizabeth Line which all provide good links to the City. Waitrose super market, John Lewis and the shopping centre are all easily found in Canary Wharf along with a selection of bars and restaurants.

### Features

- River And Canary Wharf Views
- High Specification
- 35th Floor
- Residents Leisure Facilities
- Concierge Service
- No Onward Chain

# Wards Place, London, E14



Total area (approx.): 97.26 sq. m (1046.90 sq. ft)  
Balcony area (approx.): 37.00 sq. m (398.26 sq. ft)