



Malam Gardens, E14

£675,000

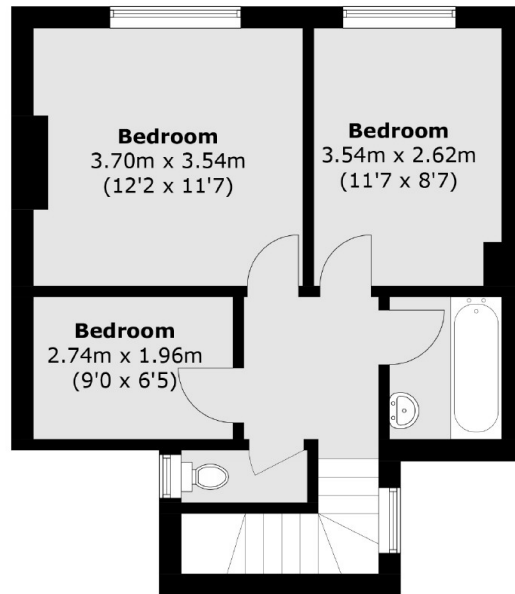
A three bedroom terraced house with a large private garden. The property has a spacious reception room, separate modern kitchen that leads to the garden and large windows throughout that let in an abundance of natural light.

The property is situated moments away from the DLR with links directly to Bank and Canary Wharf with its endless amenities.

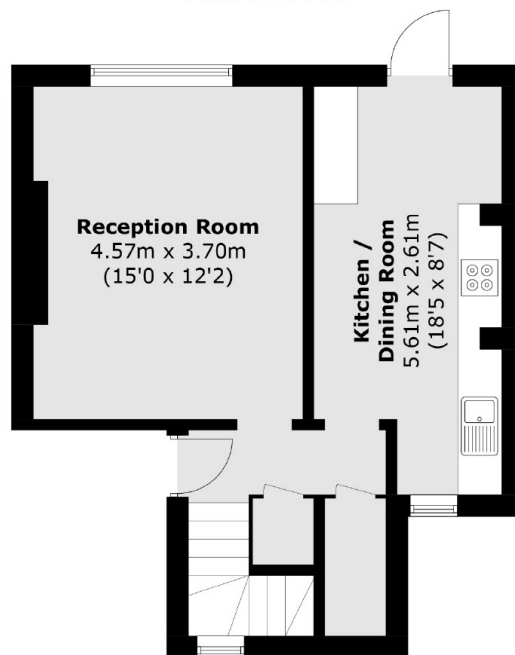
Features

- Three Bedrooms
- Terraced Freehold House
- Cul-De-Sac
- Private Garden
- Large Windows
- Transport Links

Malam Gardens, London, E14



First Floor



Ground Floor

Total area (approx.): 80.7 sq. m (868.6 sq. ft)