



Yabsley Street, E14

£375,000

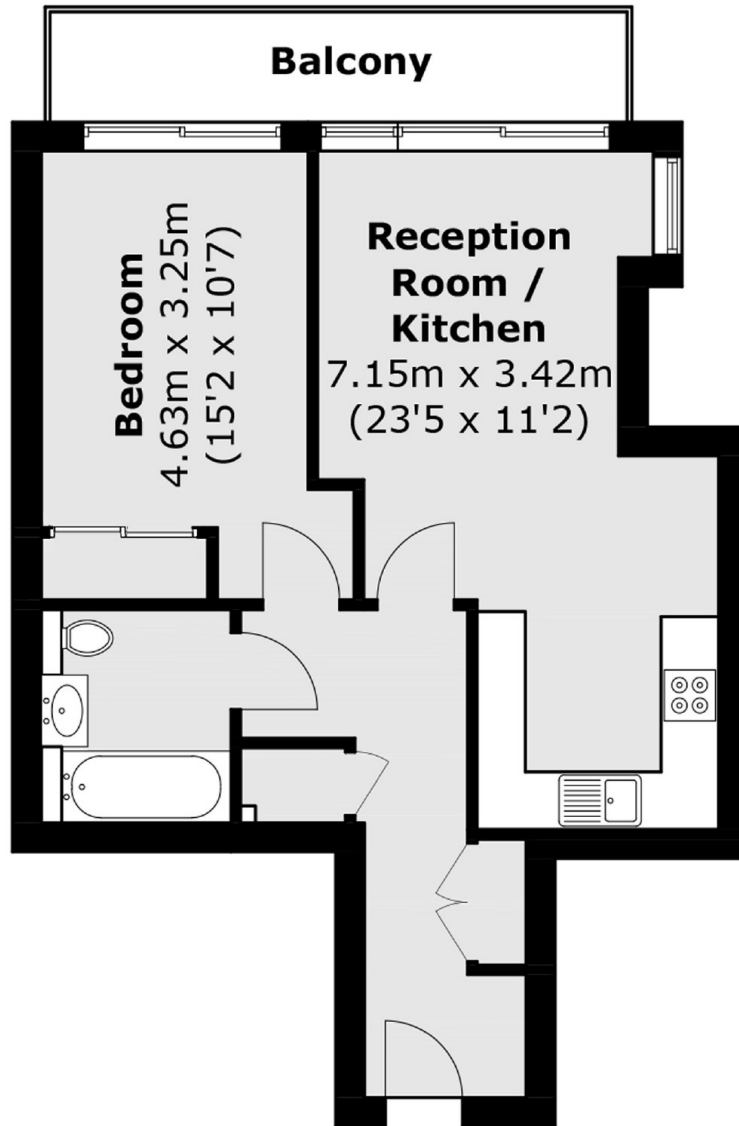
A one bedroom apartment with marina views within the popular Horizons Tower. The property has an open plan reception, concierge service and is offered with no onward chain.

Horizons Tower is situated a stone's throw from the River Thames on one side and Poplar Dock Marina on the other. Blackwall DLR station is also close by, as is the A1261 which provides great transport links into and out of Canary Wharf and the City.

Features

- One Bedroom
- Open Plan
- Concierge Service
- Marina Views
- Transport Links
- No Onward Chain

Yabsley Street, London, E14



Total area (approx.): 51.3 sq. m (552.2 sq. ft)
Balcony area (approx.): 6.9 sq. m (74.3 sq. ft)