



St. Pauls Way, E3

£450,000

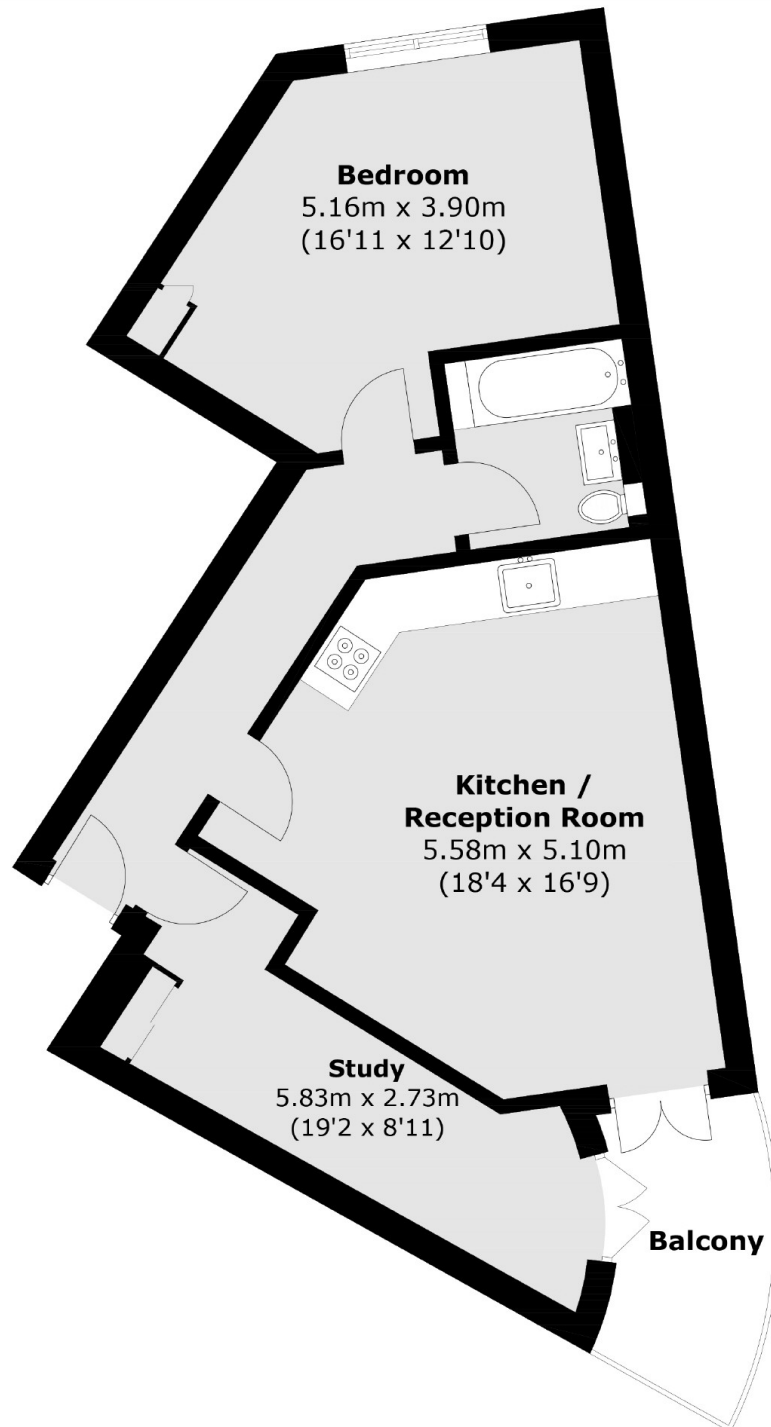
A two double bedroom home in immaculate condition located on the third floor. The property features wooden flooring throughout, secure entry phone system and lift access.

The property sits just 0.6 miles from Limehouse DLR station and Mile End Station is also just 0.7 miles away. Both stations offer excellent transport links into the City and Canary Wharf.

Features

- Two Double Bedrooms
- Modern Throughout
- 624 Sq.Ft.
- Lift Access
- Private Balcony
- Secure Entry Phone System

St. Pauls Way, London, E3



Total area (approx.): 58.0 sq. m (624.3 sq. ft)
Balcony: 4.9 sq. m (52.7 sq. ft)