



Devons Road, E3

£400,000

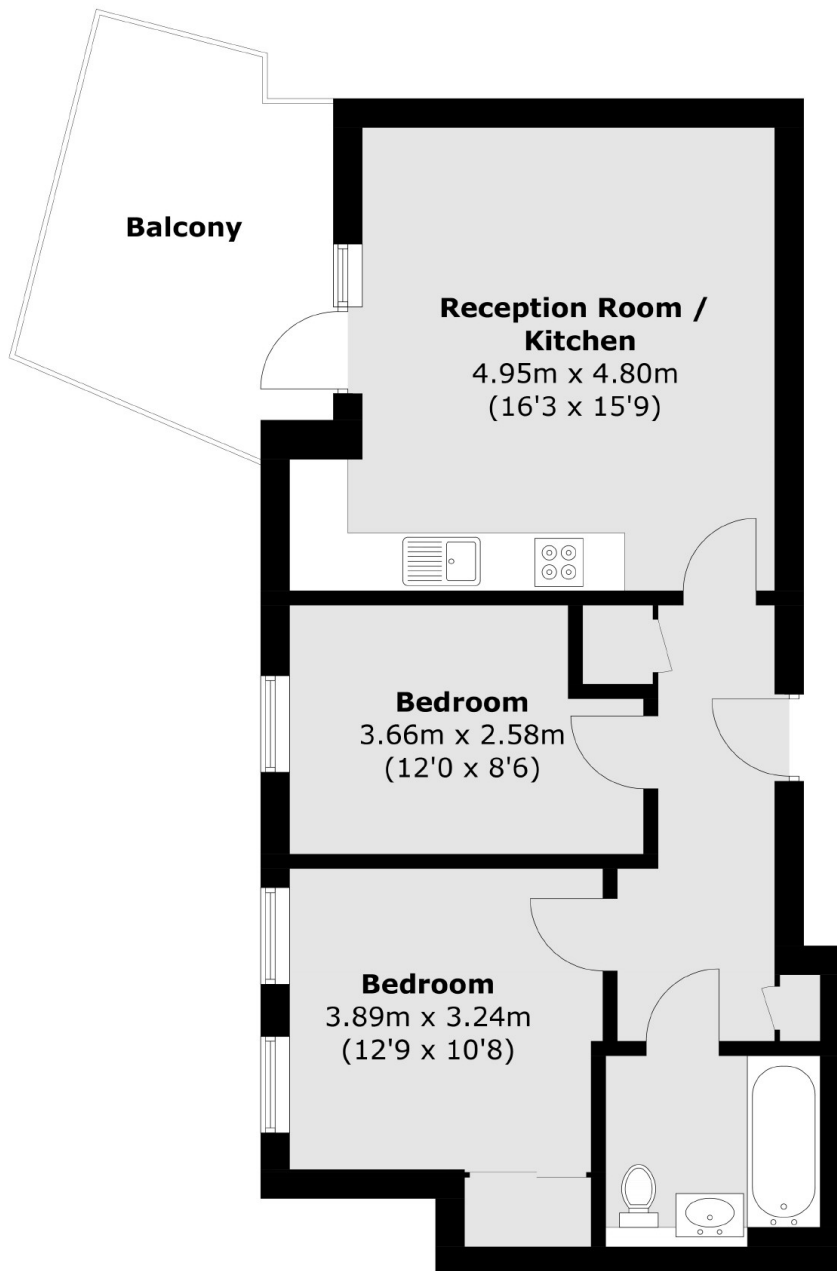
A two double bedroom south facing home in Abode Apartments. The property is located on the top floor of the development, has unrestricted views of Canary Wharf, a large private balcony, very low service charge and a long lease.

Abode Apartments is in a prime location just minutes from a range of restaurants, local amenities and shopping facilities. The prestigious Mile End Park is also within easy reach and Devons Road DLR offers terrific links to Canary Wharf and the City.

Features

Offers In Excess Of
No Onward Chain
Canary Wharf Views
Fourth Floor
South Facing
Mile End Park

Devons Road, London, E3



Total area (approx.): 55.8 sq. m (600.6 sq. ft)
Balcony : 10.9 sq. m (117.3 sq. ft)