



Yabsley Street, E14

£425,000

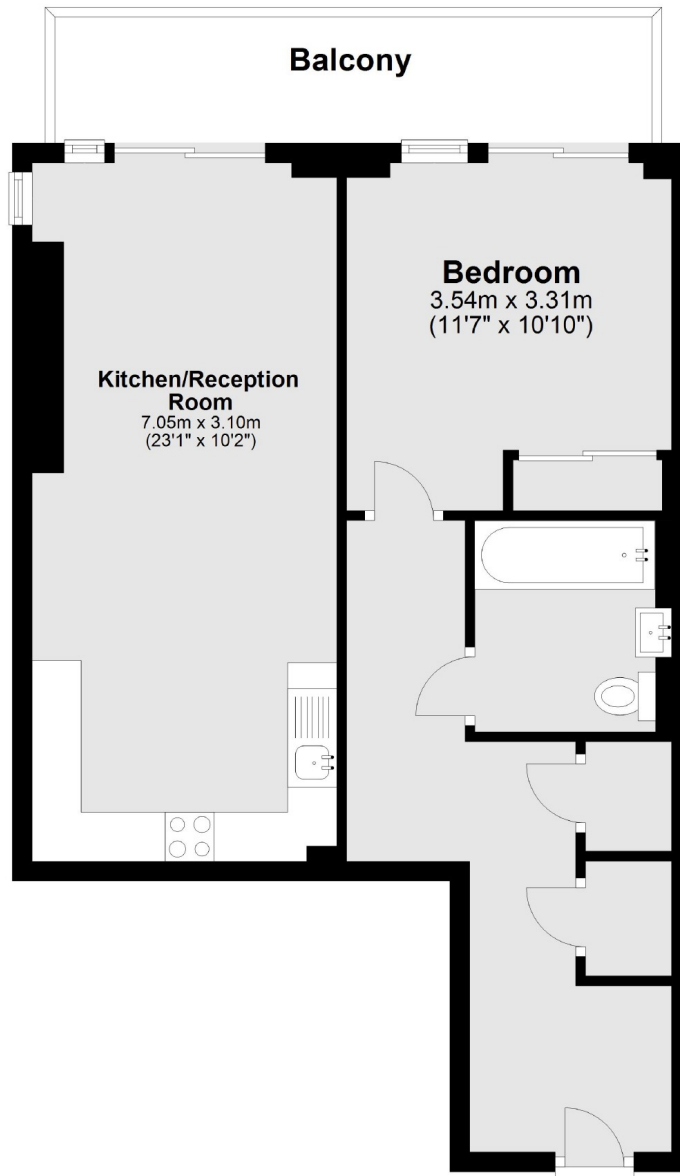
Offering 563 Sq.Ft of ample living space and views over the marina and Canary Wharf is this one bedroom home located within the popular Horizons Tower. Features include large balcony, open plan reception, concierge and no onward chain.

Horizons Tower is situated a stone's throw from the River Thames on one side and Poplar Dock Marina on the other. Blackwall DLR station is also close by, as is the A1261 which provides great transport links into and out of Canary Wharf and the City.

Features

- 563.7 Sq.Ft
- Large Balcony
- Concierge Service
- Open Plan Reception
- Marina and Canary Wharf Views
- No Onward Chain

Yabsley Street, London, E14



Main area: Approx. 52.4 sq. metres (563.7 sq. feet)
Plus balconies, approx. 8.4 sq. metres (90.6 sq. feet)