



## South Quay Square, E14

£475,000

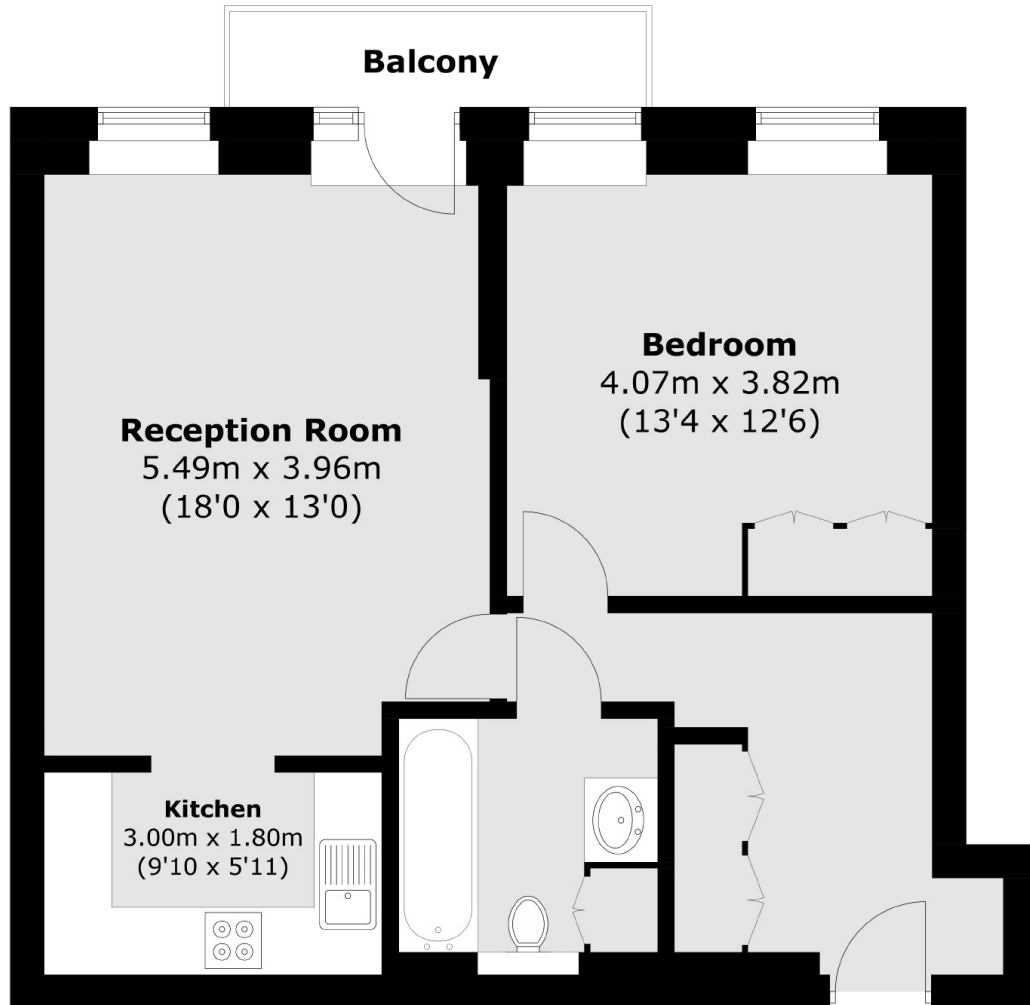
A one bedroom apartment in immaculate condition ideally located for Canary Wharf. The property has 638 sq.ft of living space, a private balcony with dock views, concierge service and residents leisure facilities. It is offered on a chain free basis and is vacant.

Discovery Dock is ideally located for Canary Wharf. The Jubilee and Elizabeth lines are just a short distance away which provides for good links to The City. A wide selection of restaurants, bars as well as Waitrose super market and shopping centre are also within easy reach.

### Features

Offers In Excess Of  
Secure Allocated Parking  
Dock Views  
638 Sq.ft  
Residents Leisure Facilities  
Concierge Service

# South Quay Square, London, E14



## Third Floor

Total area (approx.): 59.3 sq. m (638.3 sq. ft)  
Balcony area (approx.): 3.1 sq. m (33.4 sq. ft)