



## Fairmont Avenue, E14

£427 Per week

A studio apartment on the sixteenth floor of this popular dockside development. This bright apartment has floor to ceiling windows, a separate sleeping area and stunning dock views.

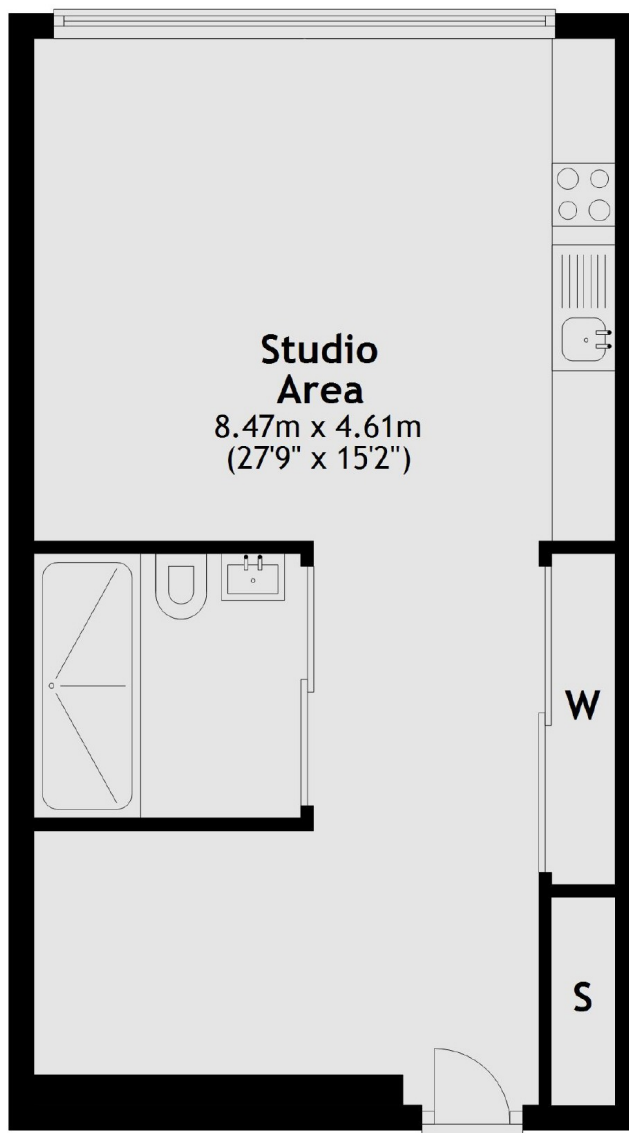
Ontario Tower is moments from the shops, bars and restaurants of Canary Wharf, including the popular Le Relais de Venise.

### Features

- Studio Suite
- Sixteenth Floor
- Dock Views
- Wooden Flooring
- Concierge
- Residents Leisure Facilities

# Fairmont Avenue, London, E14

## 16th Floor



Total area: approx. 39.1 sq. metres (420.4 sq. feet)