



Wards Place, E14

£1,100,000

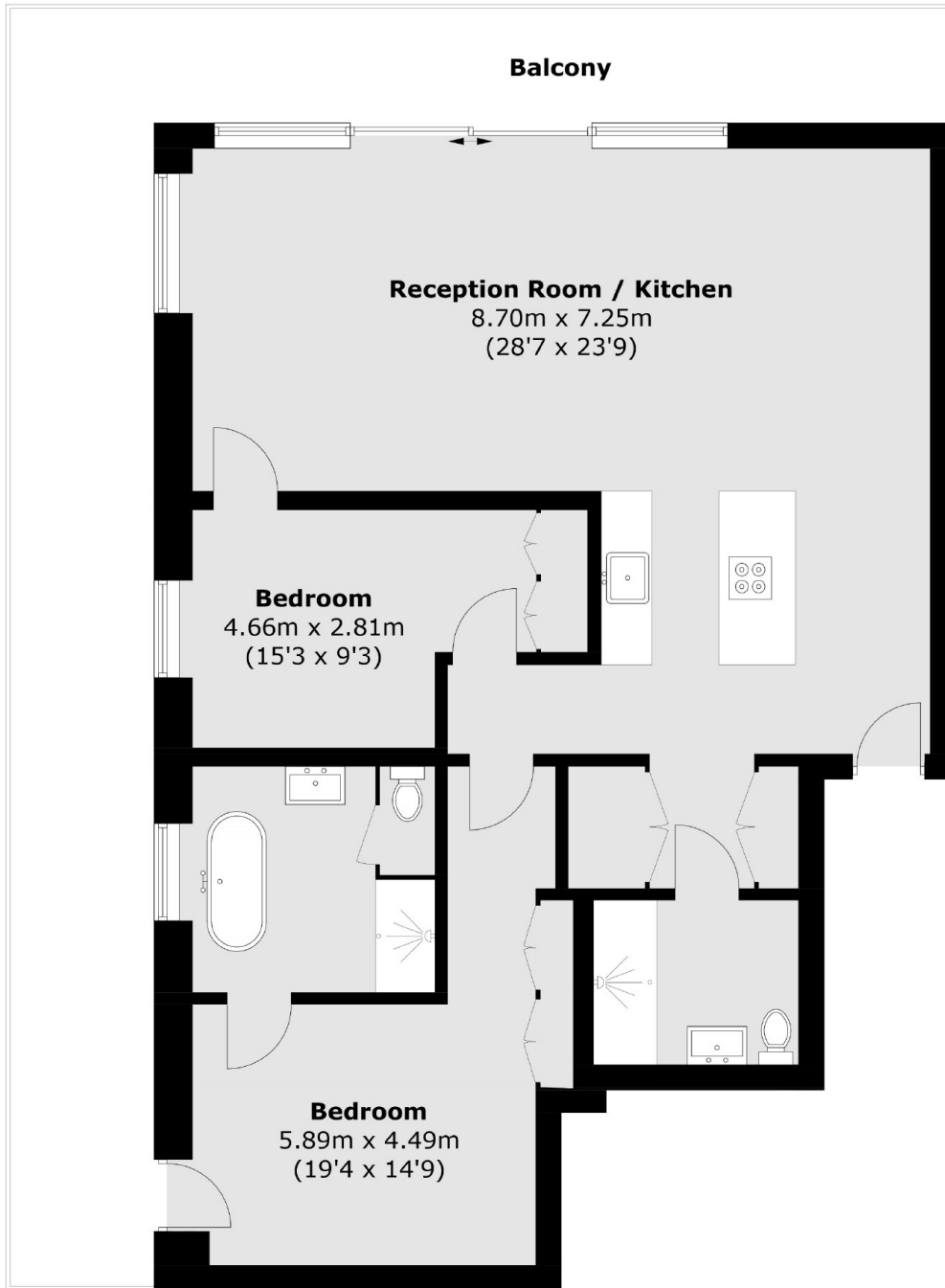
Located on the 37th floor and offering Canary Wharf and River views is this two bedroom home within the sought after Warden development. The property has 1,071 sq.ft of living space, a 412 sq.ft terrace, residents leisure facilities, concierge service and is offered with no onward chain.

Located just a few moments from Canary Wharf which provides access to Canary Wharf Underground / DLR / Crossrail (Elizabeth Line) which all provide good links to the City. Waitrose super market, John Lewis and the shopping centre are all easily found in Canary Wharf along with a selection of bars and restaurants.

Features

Offers In Excess Of
River And Canary Wharf Views
412 Sq.ft Terrace
37th Floor
Residents Leisure Facilities
Concierge Service

Wards Place, London, E14



Total area (approx.): 99.5 sq. m (1,071.08 sq. ft)
Balcony: 38.3 sq. m (412.3 sq. ft)