



## Limeharbour, E14

£650,000

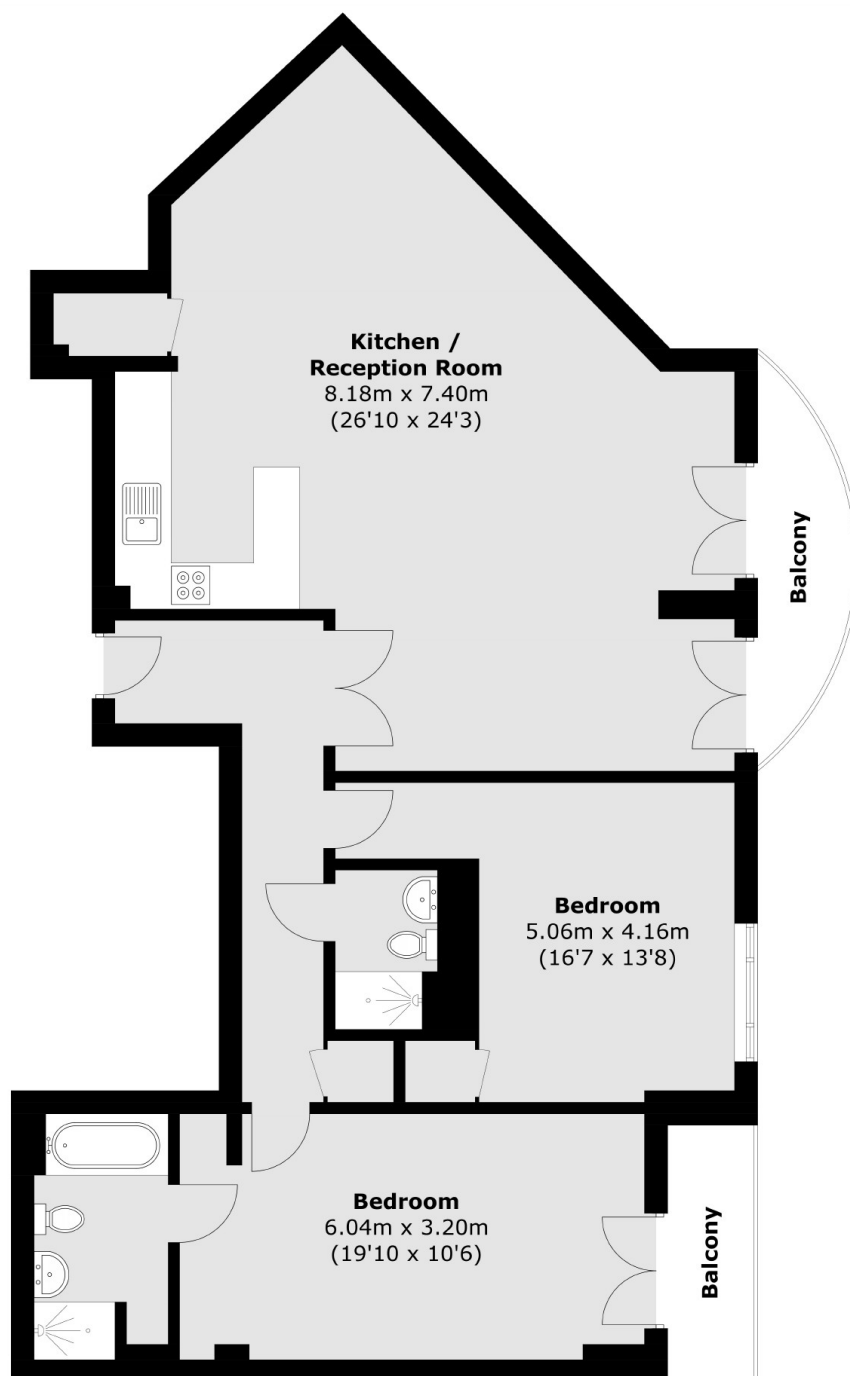
Offering over 1,200 sq.ft of ample living space is this two bedroom apartment ideally located for Canary Wharf. The property has an additional 90 sq.ft south facing terrace with direct views of the O2 Arena and Canary Wharf, secure allocated parking, concierge service and is offered with no onward chain.

City Tower is ideally for Canary Wharf and The City, as well as Crossharbour DLR station which provides good connections further into both the Wharf, Bank and City airport. Canary Wharf has a wide variety of shops restaurants and bars as well as Waitrose supermarket.

### Features

- 1,210 Sq.Ft
- 90 Sq.Ft Terrace
- Canary Wharf and O2 Views
- Secure Allocated Parking
- Concierge Service
- No Onward Chain

# Limeharbour, London, E14



Total area (approx.): 112.5 sq. m (1,210.9 sq. ft)  
Balcony: 8.4 sq. m (90.4 sq. ft)