

Bow Common Lane, E3

£425,000

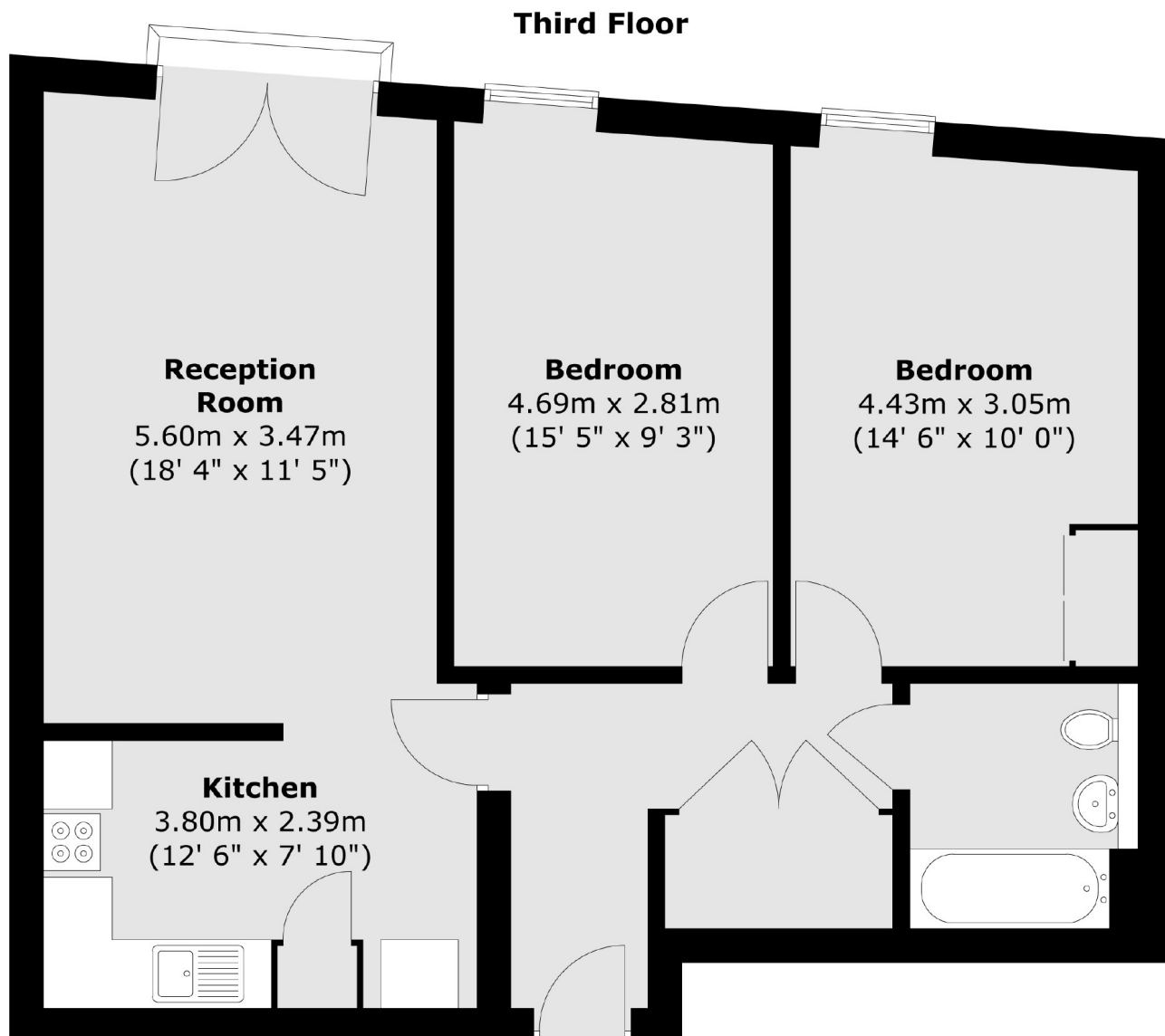
A two double bedroom home in immaculate condition located on the top floor. The property features wooden flooring throughout, secure entry phone system and lift access.

Bow Common Lane is located a 9 minute walk from Devons Road DLR station, a 12 minute walk to Mile End station, and a 15 minute walk from Bromley-by-Bow station as well as several bus stops providing great access into the City and Canary Wharf.

Features

Offers In Excess Of
Two Double Bedrooms
Secure Entry System
Lift Access
Large Communal Garden
Top Floor

Bow Common Lane, London, E3



Total area (approx.) : 71.9 sq. m (774 sq. ft)
Total balcony area (approx.) : 0.5 sq. m (5 sq. ft)