



Marsh Wall, E14

£570,000

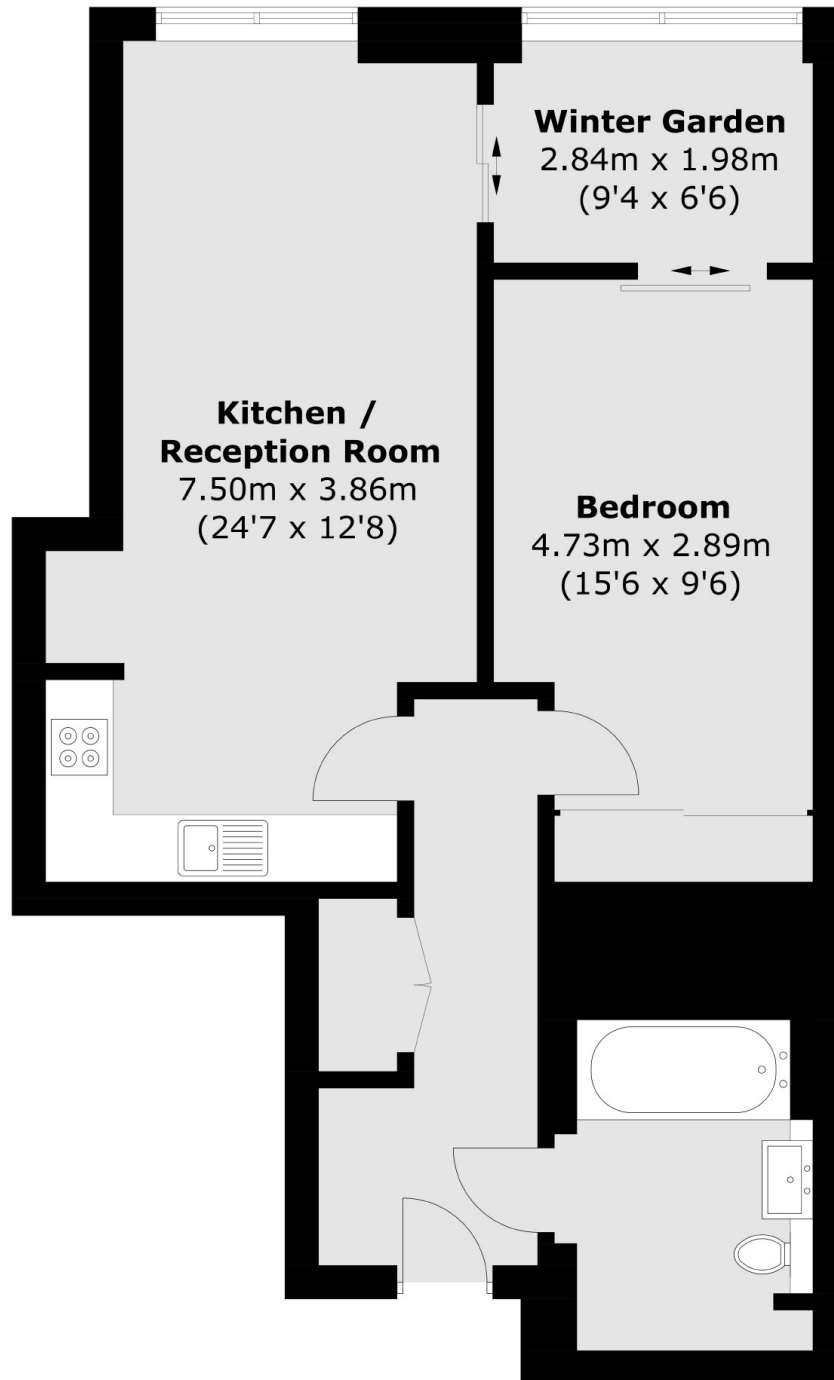
Located on the 13th floor and offering river and Canary Wharf views is this one bedroom home within the sought after Landmark Pinnacle. The property has 697 sq.ft of ample living space, a winter garden, residents leisure facilities and concierge service.

Heron Quays DLR, Canary Wharf London Underground as well as the Elizabeth line and the Thames Clippers river service. All offer good links to the City.

Features

- 13th Floor
- 697 Sq.Ft
- Winter Garden
- River & Canary Wharf Views
- Residents Garden Lounge
- Residents Leisure Facilities

Marsh Wall, London, E14



Total area (approx.): 64.8 sq. m (697.5 sq. ft)