



Mariners Mews, E14

£1,250,000

Boasting spectacular views of the River Thames and the O2 is this four bedroom house. This immaculately presented home offers 1,761 internal sq.ft split over four floors with a large private garden and a garage.

Mariners Mews is on the River Thames, only a 10 minute walk to Island Gardens DLR station offering excellent transport links to anywhere in London. The house is in close proximity to the shops, delis and restaurants in Canary Wharf.

Features

- Freehold House
- Four Bedrooms
- Private Large Garden
- Two Balconies
- Two Bathrooms
- Private Garage



Mariners Mews, E14

The house is beautifully light, airy and boasts of ample outdoor space with two balconies and a private garden.

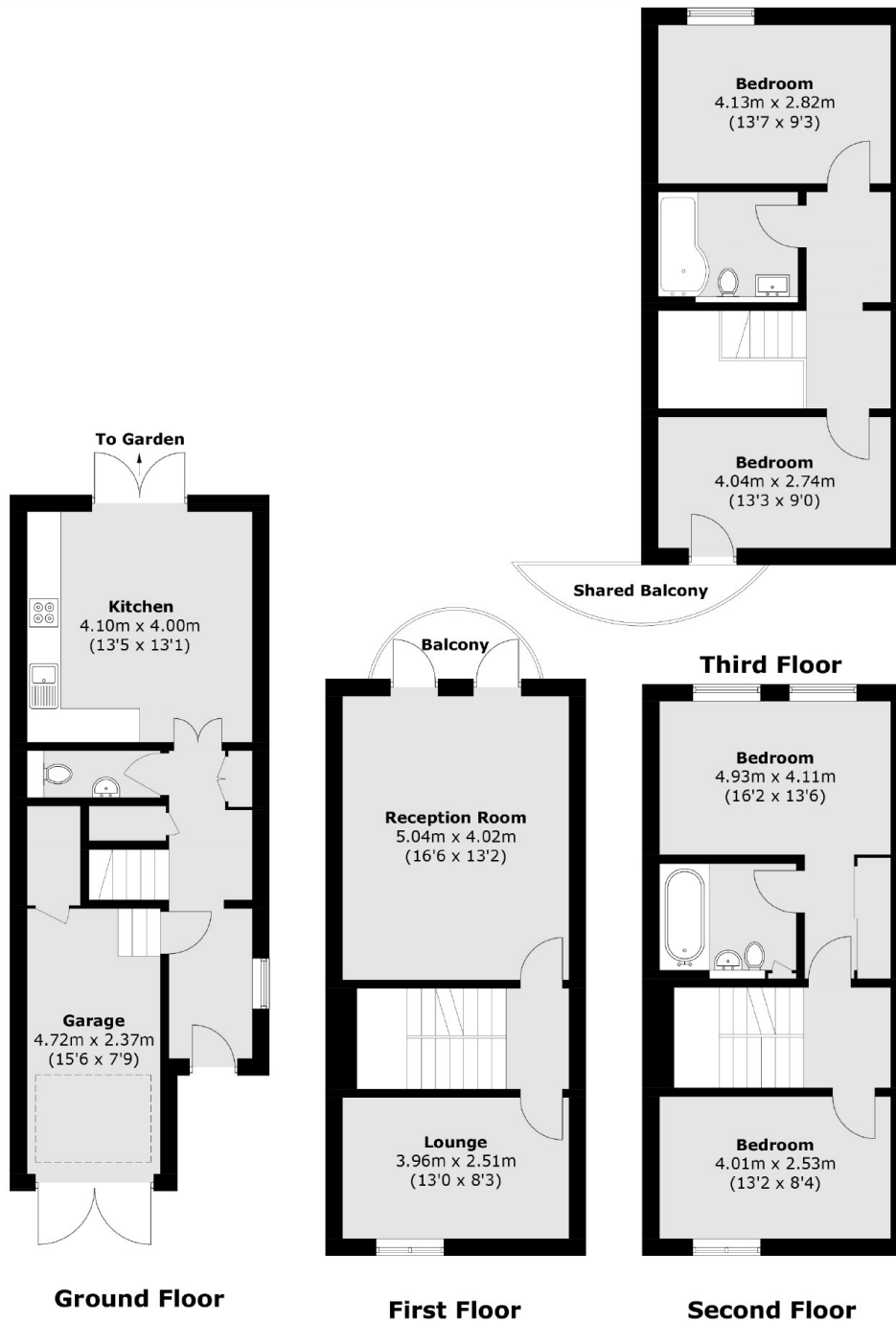
There are four good sized bedrooms on the top two floors with two bathrooms. The reception can be found on the first floor with a further lounge area that can be turned into a bedroom.

There is also a separate WC and a private garage on the ground floor.

The property also has an allocated parking space, solar panels, battery and EV charging point.



Mariners Mews, London, E14



Total area (approx.): 159.5 sq. m (1,716.8 sq. ft)
(Including Garage)
Balcony area (approx.): 2.7 sq. m (29.1 sq. ft)
(Excluding Shared Balcony)