



St. Davids Square, E14

£542 Per week

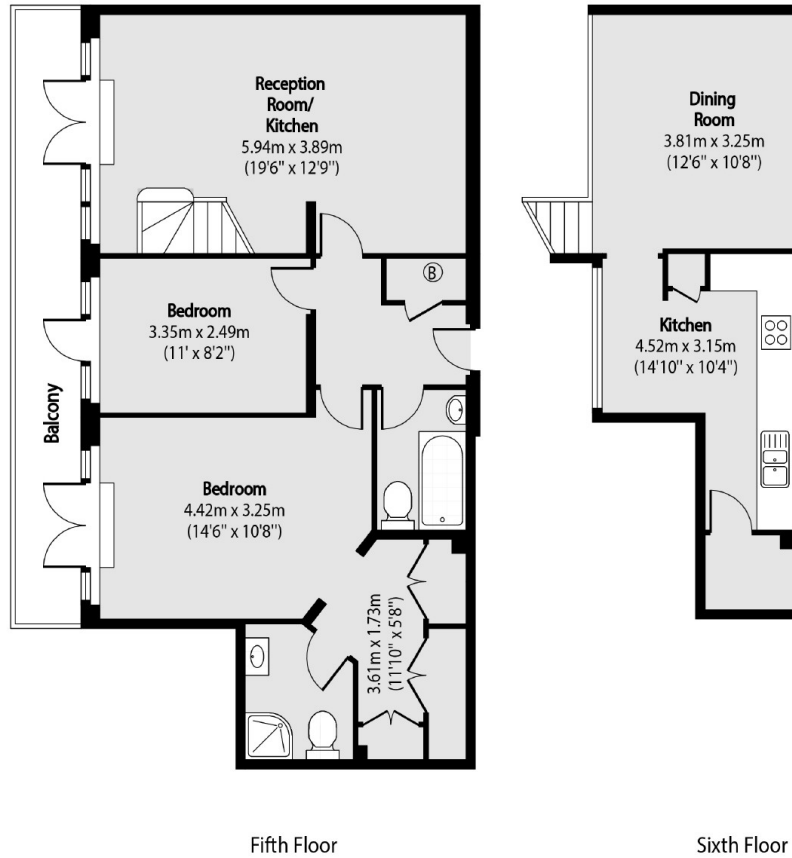
A bright two bedroom duplex apartment, set over the fifth and sixth floors on this riverside development. Boasting laminate flooring, separate kitchen and dining area, plus a private balcony.

St. Davids Square is a private development moments from the The Docklands Sailing Centre and the amenities of Canary Wharf.

Features

- Two Bedrooms
- Two Bathrooms
- Concierge
- Balcony
- Wooden Flooring
- Leisure Facilities

St. Davids Square, London, E14



Total area (approx): 92.81 sq m (999 sq. ft)

Balcony total area (approx): 10.68 sq m (115 sq. ft)