



## Lyell Street, E14

£650,000

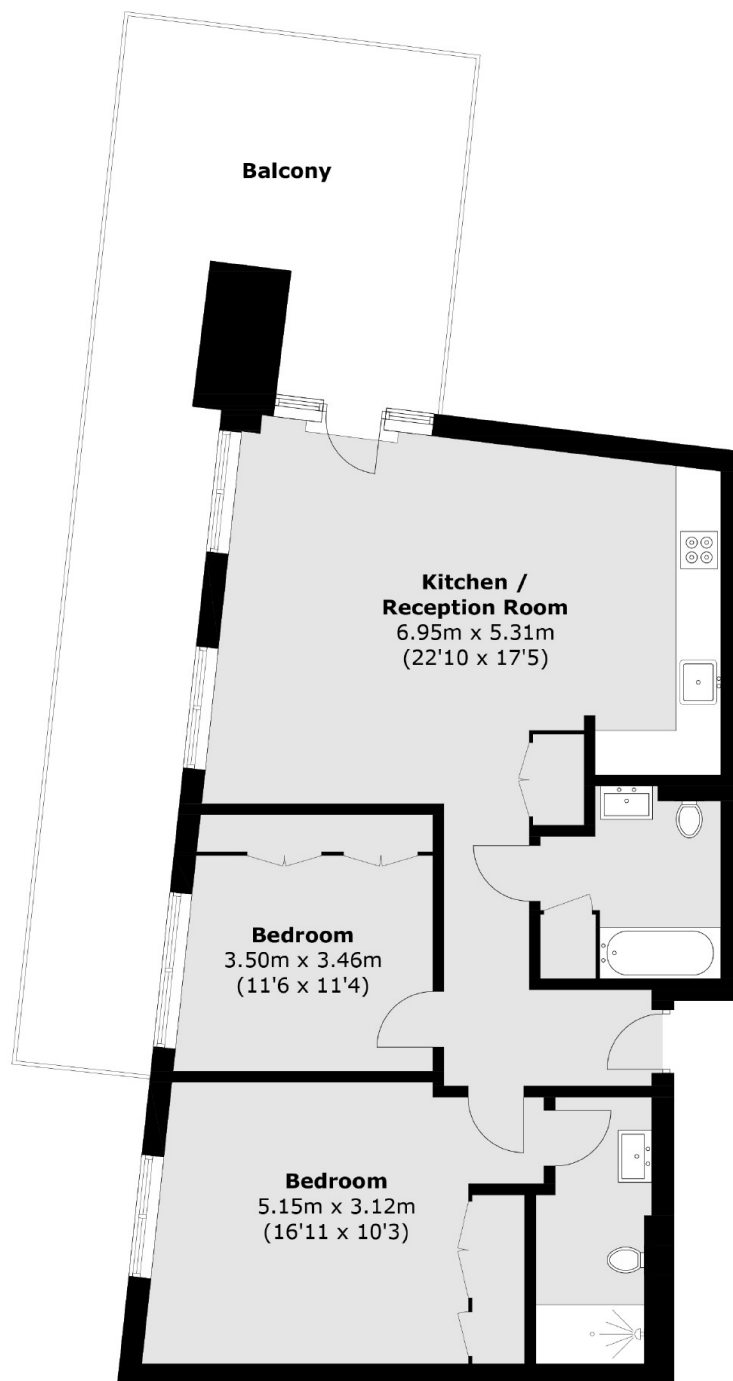
Offering 861 sq.ft of ample living space is this two bedroom home situated in the sought after London City Island development. The property has an open plan reception and dining area, modern integrated kitchen and an impressive 407 sq.ft terrace.

London City Island is a modern development within walking distance of the shops, bars and restaurants of Canning Town and Canary Wharf.

### Features

- 861 sq.ft
- Concierge
- Residents Facilities
- Large Private Terrace
- Two Bedrooms
- Two Bathrooms

# Lyell Street, London, E14



Total area (approx.): 80.0 sq. m (861.1 sq. ft)  
Balcony area (approx.): 37.9 sq. m (407.9 sq. ft)

## Dexters

Canary Wharf  
39 Westferry Road  
London  
E14 8JH  
Sales  
020 7517 1199

Energy Rating: . We aim to make our particulars both accurate and reliable. However they are not guaranteed; nor do they form part of an offer or contract. If you require clarification on any points then please contact us, especially if you're traveling some distance to view. Please note that appliances and heating systems have not been tested and therefore no warranties can be given as to their good working order.

 **RICS** | Regulated  
Estate Agent  
and Letting Agent

dexters.co.uk