



Dollar Bay Place, E14

£750 Per week

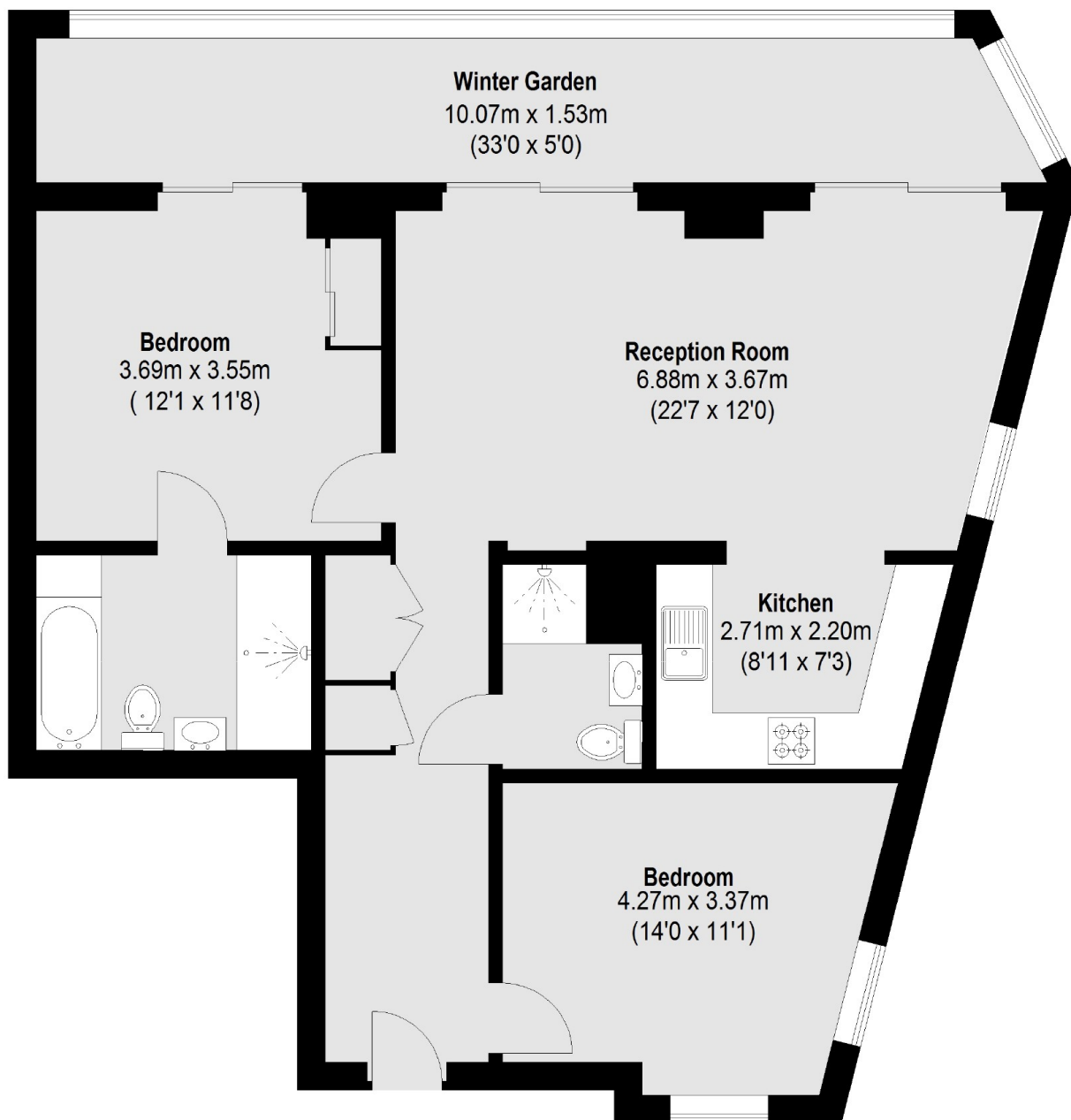
A two bedroom two bathroom apartment located on the fourth floor of this dockside development. This modern apartment has high specification fixtures and fittings, a winter garden and benefits from residents facilities.

Dollar Bay Point is within easy reach of the shops, bars and restaurants of Canary Wharf Complex.

Features

- Two Bedrooms
- Two Bathrooms
- Fourth Floor
- Winter Garden
- Floor to Ceiling Windows
- Residents Facilities

Dollar Bay Place, London, E14



Total area (approx.): 98.02 sq. m (1055 Sq. ft)
(Including Winter Garden)