



Garford Street, E14

£484 Per week

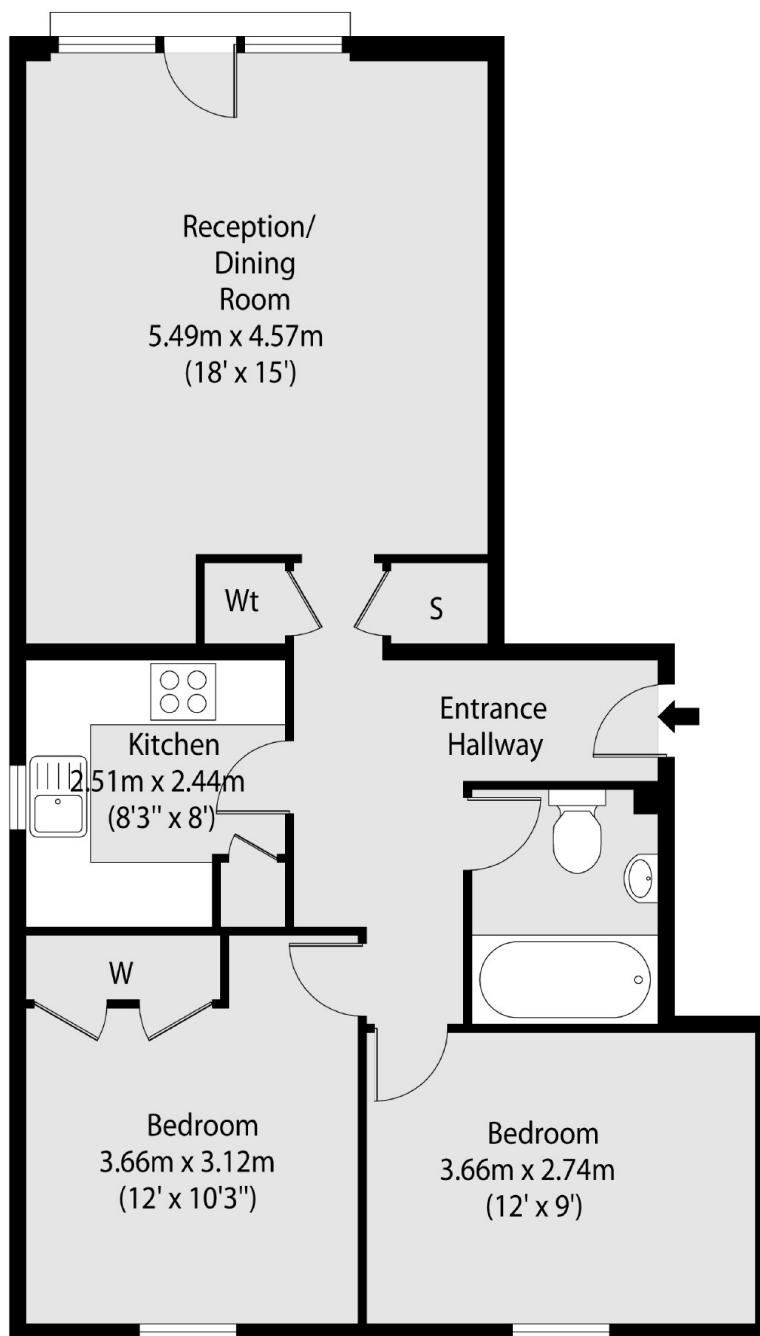
A large two bedroom apartment on the third floor (with lift) of this popular residential development. This bright apartment has equal sized bedrooms, a separate kitchen and private parking.

Premier Place is moments from the shops, bars and restaurants of Canary Wharf including the renowned Browns all-day brasserie.

Features

- Two Bedroom
- One Bathroom
- Third Floor
- Private Parking
- Juliette Balcony
- Porter

Garford Street, London, E14



Total area (approx): 64.38 sq m (693 sq. ft)