



Crews Street, E14

£400,000

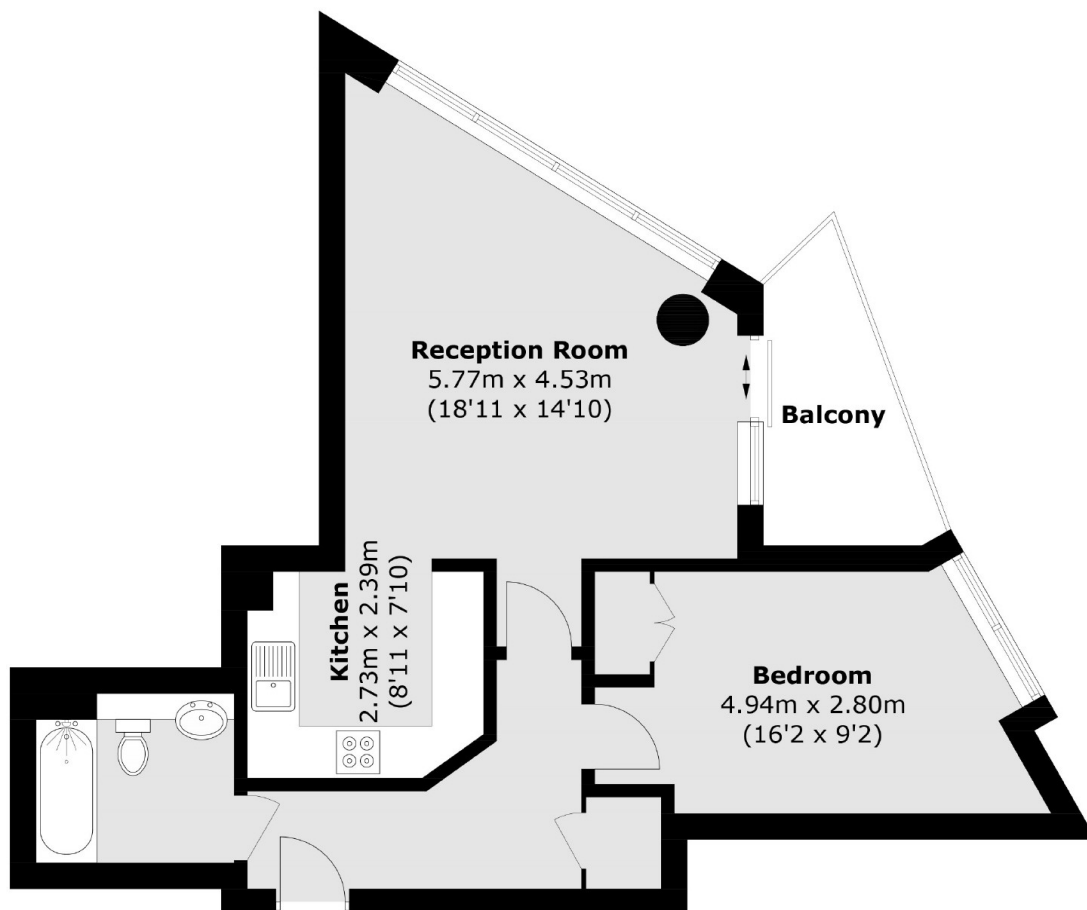
A much sought after one bedroom home with views of the river and City from a private balcony within the highly popular Odyssey development. Residents benefit from on-site leisure facilities, concierge service and the property is offered with no onward chain.

Orion Point is situated within minutes walking distance to Canary Wharf and many of the elite shops, bars dock-side attractions and restaurants of Canary Wharf and West India Quay. Local transport links include Mudchute & Crossharbour (DLR) & Canary Wharf Station (Jubilee Line, Cross Rail & DLR) within a short walking distance as well as many quick routes into and out of London for the motorist.

Features

- Offers In Excess Of £400,000
- River and City Views
- Private Balcony
- Residents Leisure Facilities
- Concierge Service
- No Onward Chain

Crews Street, London, E14



Total area (approx.): 54.1 sq. m (582.3 sq. ft)
Balcony area : 5.3 sq. m (57.0 sq. ft)