



Glengall Grove, E14

£350,000

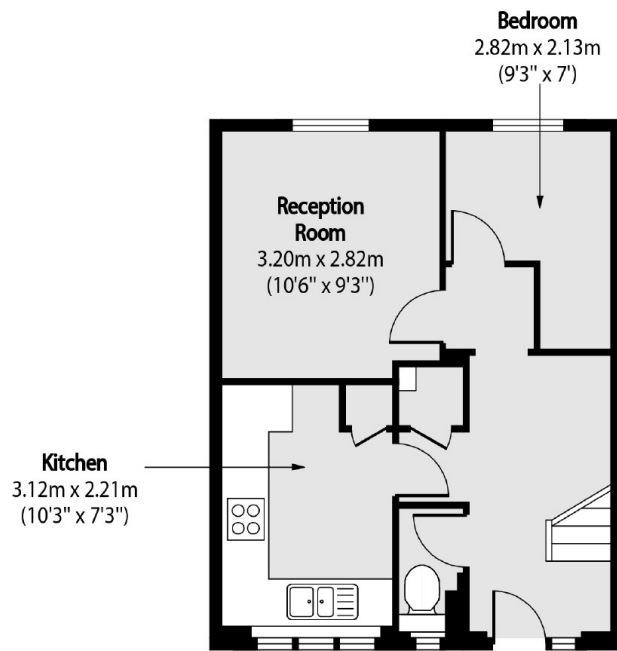
Used as a former HMO this property is ideally set up for any investor. Features to include three/four bedrooms, low service charge, low ground rent and no onward chain.

Skeggs House is ideally located for Canary Wharf which offers a variety of shops, restaurants and transport links.

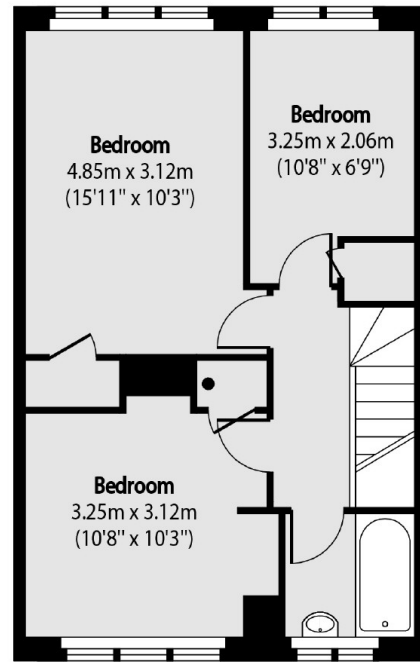
Features

- 775 Sq.Ft
- Three Bedrooms
- Low Service Charge
- Low Ground Rent
- Spilt Level
- Previous HMO

Glengall Grove, London, E14



Third Floor



Fourth Floor

Total area (approx): 72.00 sq m (775 sq. ft)