



## Fairmont Avenue, E14

### £899,950

Offering 1,200 sq.ft of ample living space and a terrace with river views measuring 280 sq.ft this home has to be viewed. The property includes allocated parking, residents leisure facilities, concierge service and if offered with no onward chain.

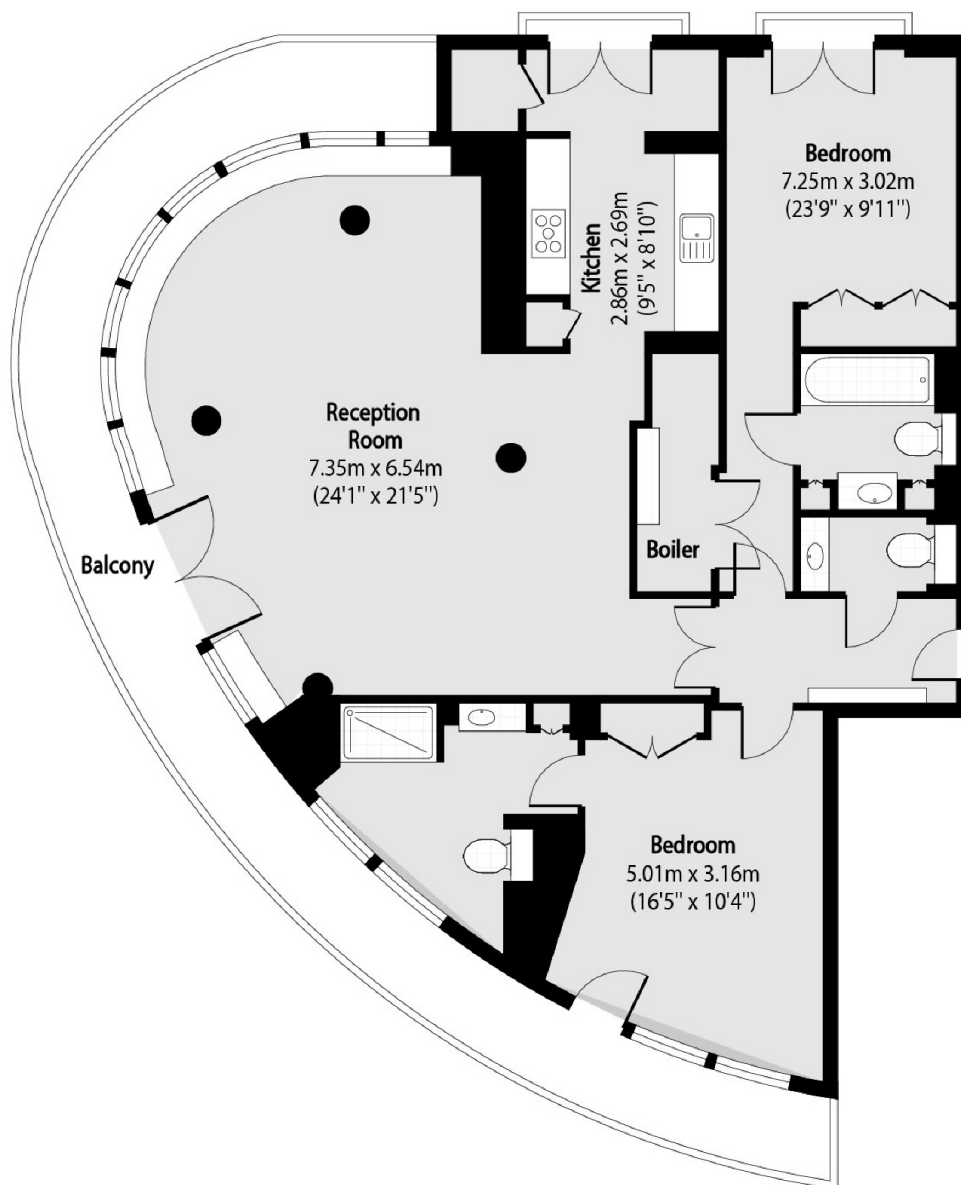
NPW has transport options to include Blackwall DLR station which provides good links to the City and Canary Wharf, Canary Wharf is a short walk away which offers many dining & shopping options which are in abundance and the New Providence Wharf site itself has a local café, dry cleaning services.

### Features

1,182 Sq.ft  
280 Sq. ft Terrace

River Views  
Allocated Parking  
Residents Leisure Facilities

# Fairmont Avenue, London, E14



Total area (approx): 109.79 sq m (1182 sq. ft)

Balcony total area (approx): 25.89 sq m (279 sq. ft)