



Hutchings Street, E14

£540,000

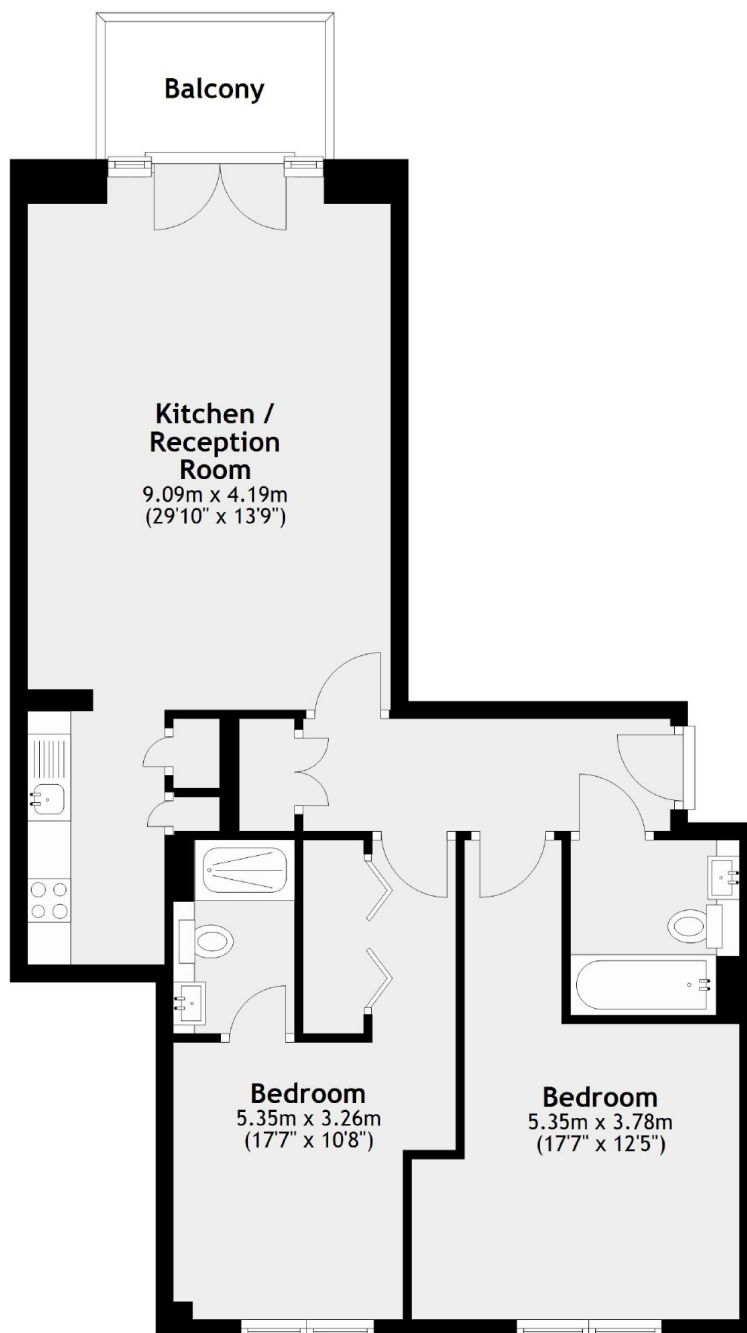
Located within a gated riverside development is this two bedroom sub penthouse apartment moments from Canary Wharf. The property has an over 900 year lease, concierge service, private balcony with City and river views and is offered with no onward chain.

Naxos Building is ideally located for Canary Wharf which offers DLR and Tube Stations as well as the Elizabeth line. Canary Wharf also has a wide selection of shops, bars, restaurants and a Waitrose supermarket.

Features

- Two Bedrooms
- Sub Penthouse
- Rive & City Views
- Two Bathrooms
- Concierge Service
- Resident Leisure Facilities

Hutchings Street, London, E14



Main area: Approx. 75.1 sq. metres (808.7 sq. feet)
Plus balconies, approx. 4.3 sq. metres (46.3 sq. feet)