



## Fairmont Avenue, E14

£657 Per week

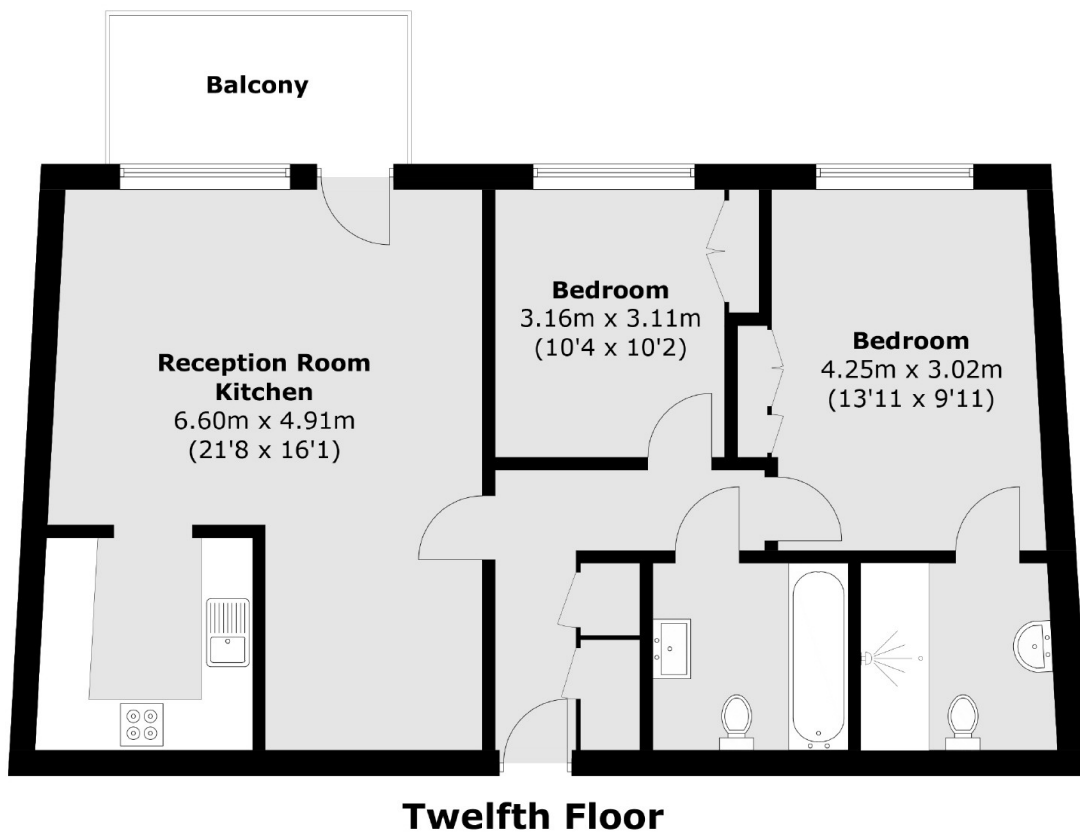
A well-presented two bedroom apartment on the twelfth floor of this popular development. This river facing apartment has floor to ceiling windows, wooden flooring and an on-site residents swimming pool and gym.

New Providence Wharf is moments from the shops, bars and restaurants of central Canary Wharf, in addition to being within moments of Blackwall DLR service.

### Features

- Twelfth Floor
- Two Bedrooms
- Two Bathrooms
- River Facing
- Residents Facilities
- Furnished

# Fairmont Avenue, London, E14



Total area (approx.): 77.2 sq. m (831.0 sq. ft)