



Western Gateway, E16

£400,000

A two bedroom home offering 814.7 sq.ft of ample living space located on a Marina facing development. Features to include open plan reception room, underfloor heating, private balcony and concierge service.

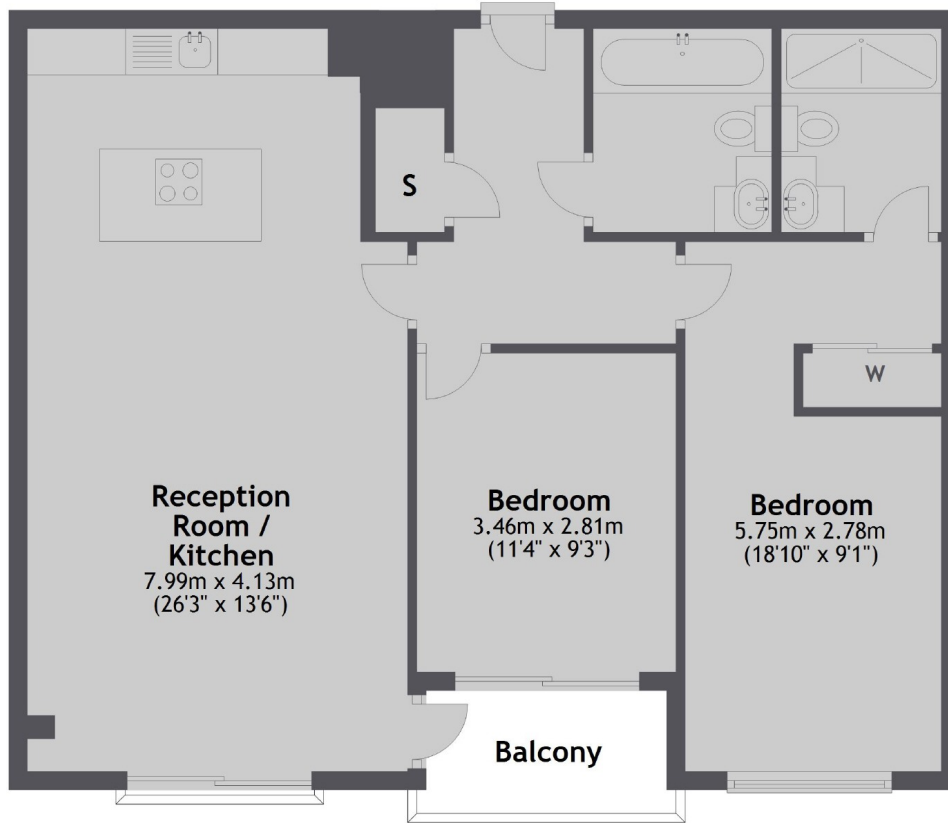
The Oxygen is a short walk from Royal Victoria DLR Station which offers good links to Canary Wharf and the City.

Features

Offers In Excess Of
Concierge
Private Balcony
Two Bedrooms
Two Bathrooms
Wooden Flooring

Western Gateway, London, E16

First Floor



Total area: approx. 75.7 sq. metres (814.7 sq. feet)