



## Cassilis Road, E14

£495,000

A great two bed, two bathroom apartment in the heart of Canary Wharf. The development benefits from 24HR concierge, gym and communal gardens.

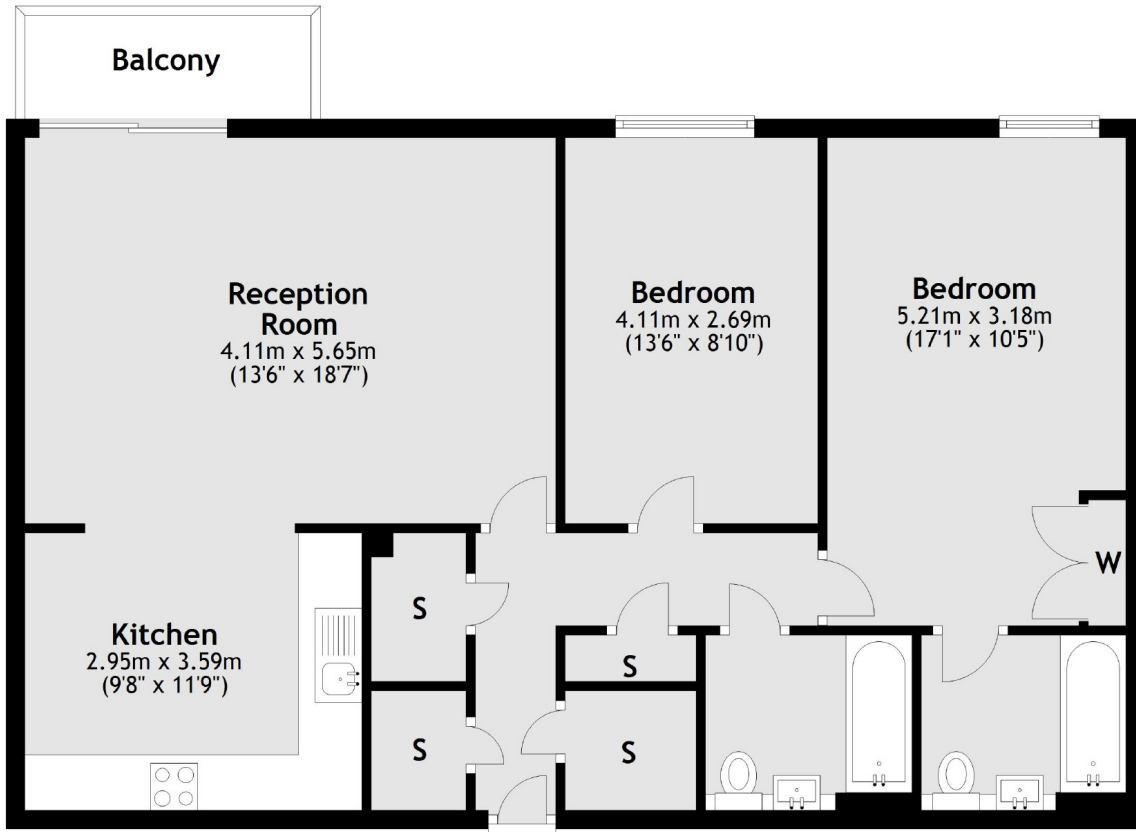
The development is located moments from Canary Wharf and the DLR perfect for professionals, as well as also benefitting from a residents gym, swimming pool and concierge.

### Features

- 904.5 Sq.Ft
- Two Bedrooms
- Two Bathrooms
- Balcony
- Communal Gardens
- Concierge

Cassilis Road,  
London, E14

### Ground Floor



Total area: approx. 84.0 sq. metres (904.5 sq. feet)