



## South Quay Square, E14

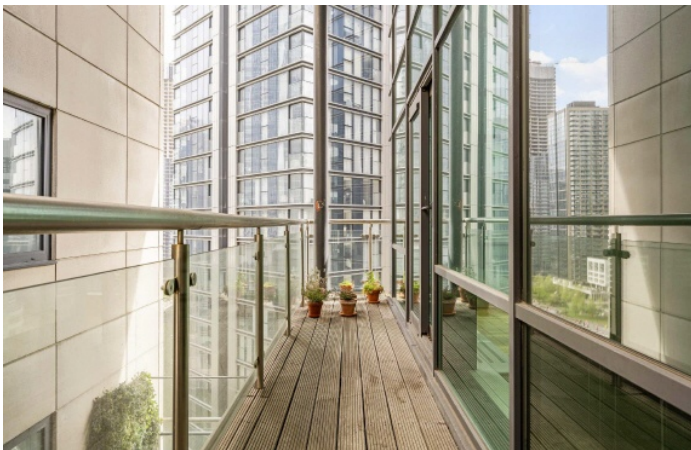
£807 Per week

An impressive two bedroom two bathroom penthouse apartment on the fifteenth floor of this sought after development. This contemporary residence has an open-plan reception room, high ceilings and on-site facilities.

Discovery Dock East is perfectly located for easy reach to both South Quay DLR and Canary Wharf Jubilee Line tube station, giving your great access to the City.

### Features

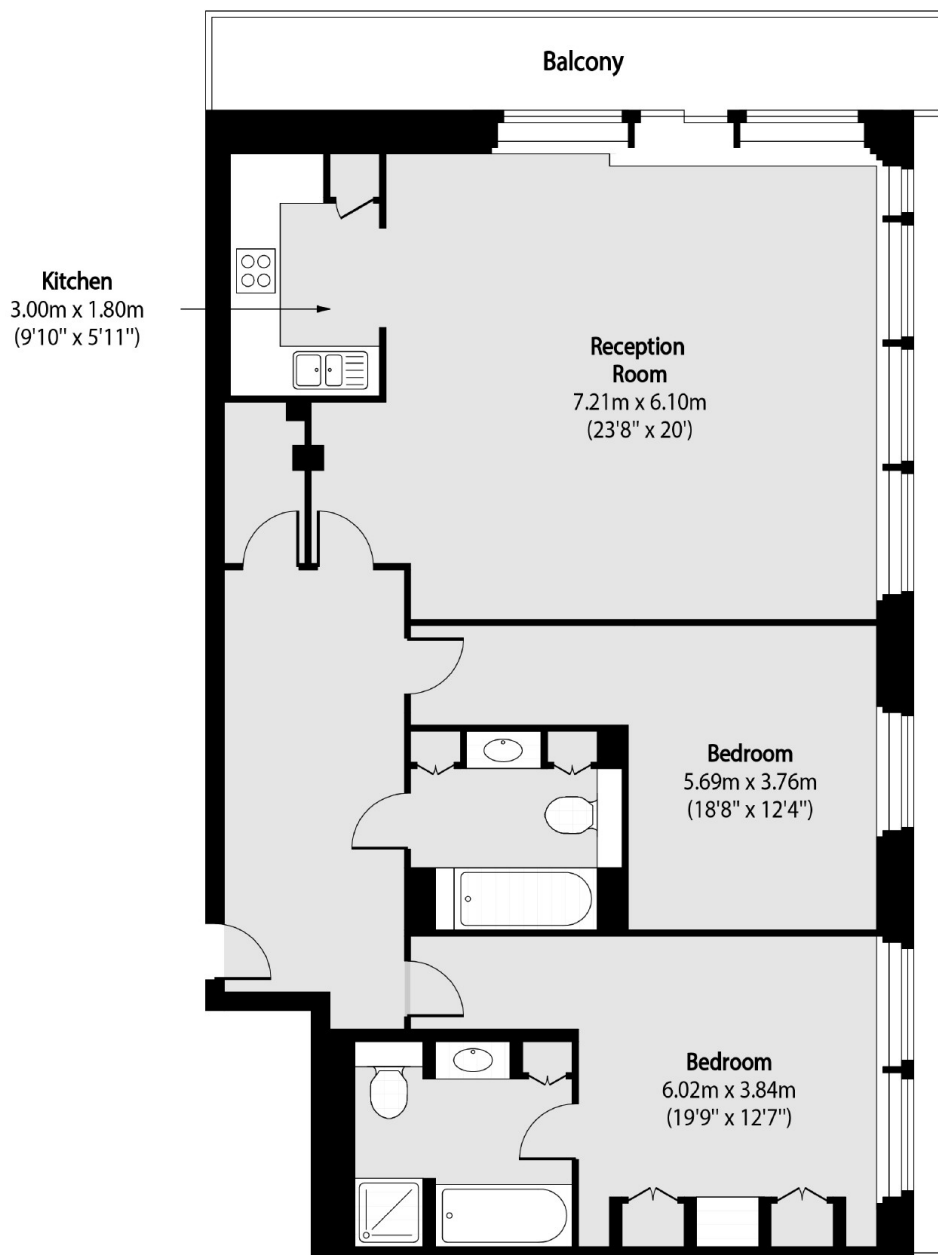
- Over 1,100sqft
- Two Bedrooms
- Two Bathrooms
- Wooden Flooring
- Vaulted Living Room Ceiling
- Residents Gym & Pool



**South Quay Square, E14**



# South Quay Square, London, E14



Total area (approx): 105.17 sq m (1132 sq. ft)

Balcony/ Outside space total area (approx): 15.61 sq m (168 sq. ft)