



Lockesfield Place, E14
£850,000

Dexters



Lockesfield Place, E14

Rare to the market and sold on a chain free basis is this well presented townhouse with 1,361.6 Sq.Ft of ample living space and an exquisite roof terrace measuring over 600 Sq.Ft. Feature to include private gated access, garage and conservatory.

This home offers flexible accommodation over three floors and consists of entrance hall, kitchen and cloak room to the ground floor. You'll find the open plan reception room leading to conservatory and roof terrace on the first floor.

The top floor consists of master bedroom with en-suite and second bedroom and main bathroom. This home would also ideally make a three bedroom with a simple change to the layout.

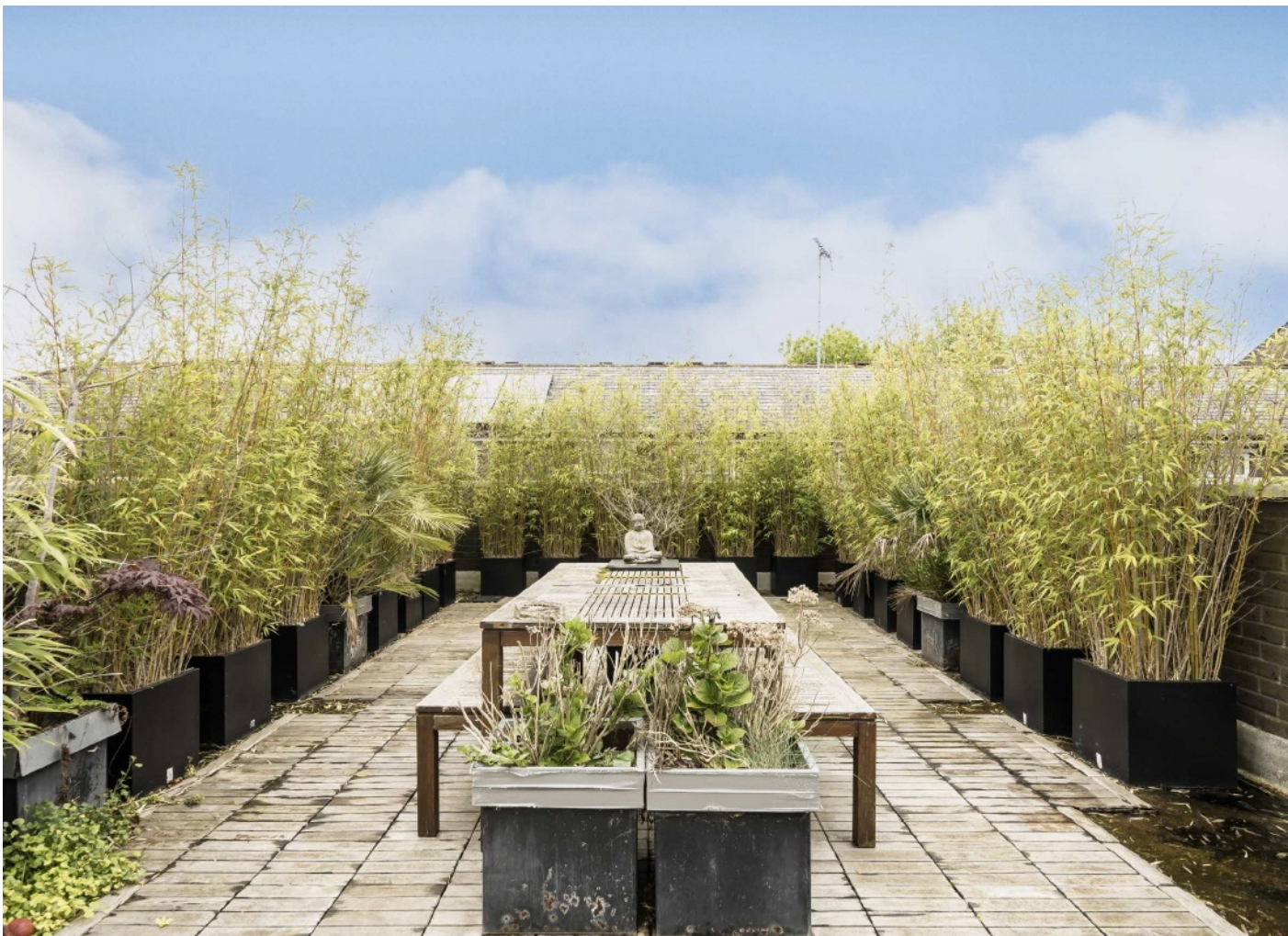
Lockesfield Place offers quick and easy access to Island Gardens DLR & Mudchute DLR Station, various bus stops creating good links into Canary Wharf and the City, Canary Wharf College is also in this catchment area.

Features

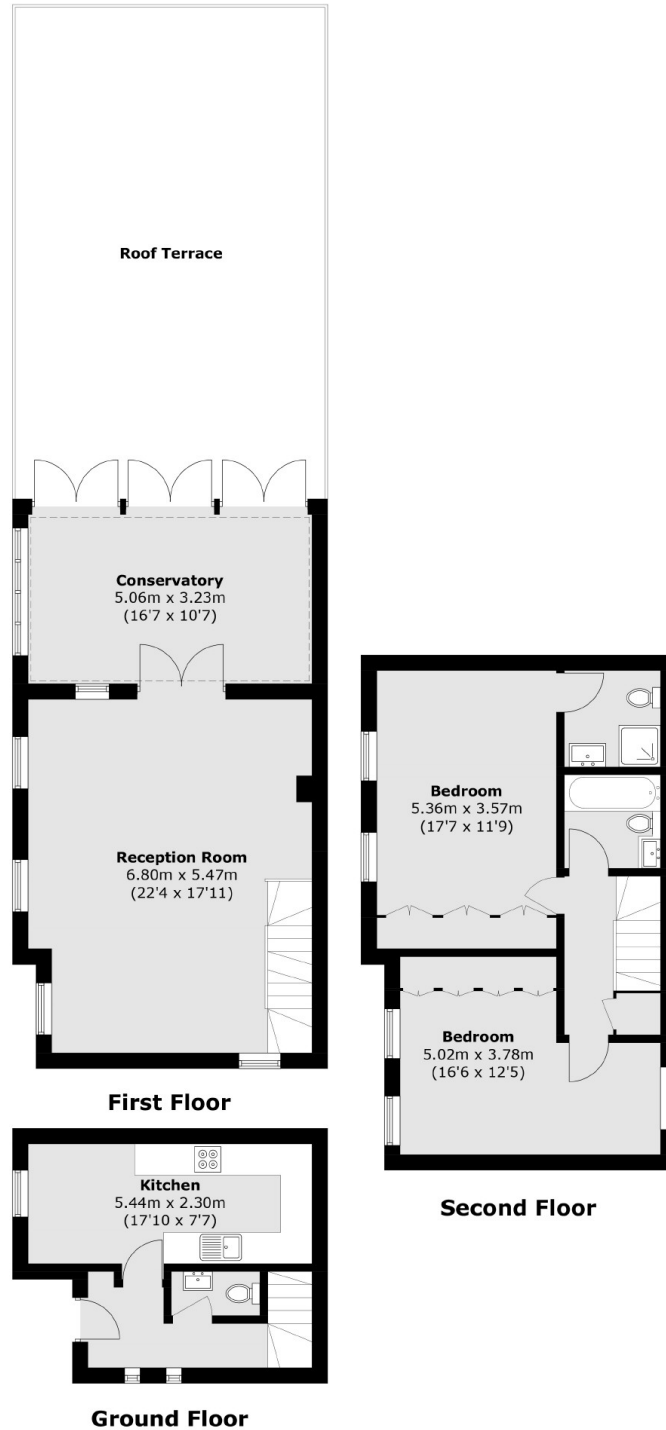
- 1361.6 Sq.Ft
- Roof Terrace 604.9 Sq.Ft
- Gated Development
- Garage
- Three Floors
- No Onward Chain







Lockesfield Place, London, E14



Total area (approx.): 126.5 sq. m (1,361.6 sq. ft)
Roof Terrace: 56.2 sq. m (604.9 sq. ft)