



## Homer Drive, E14

£600,000

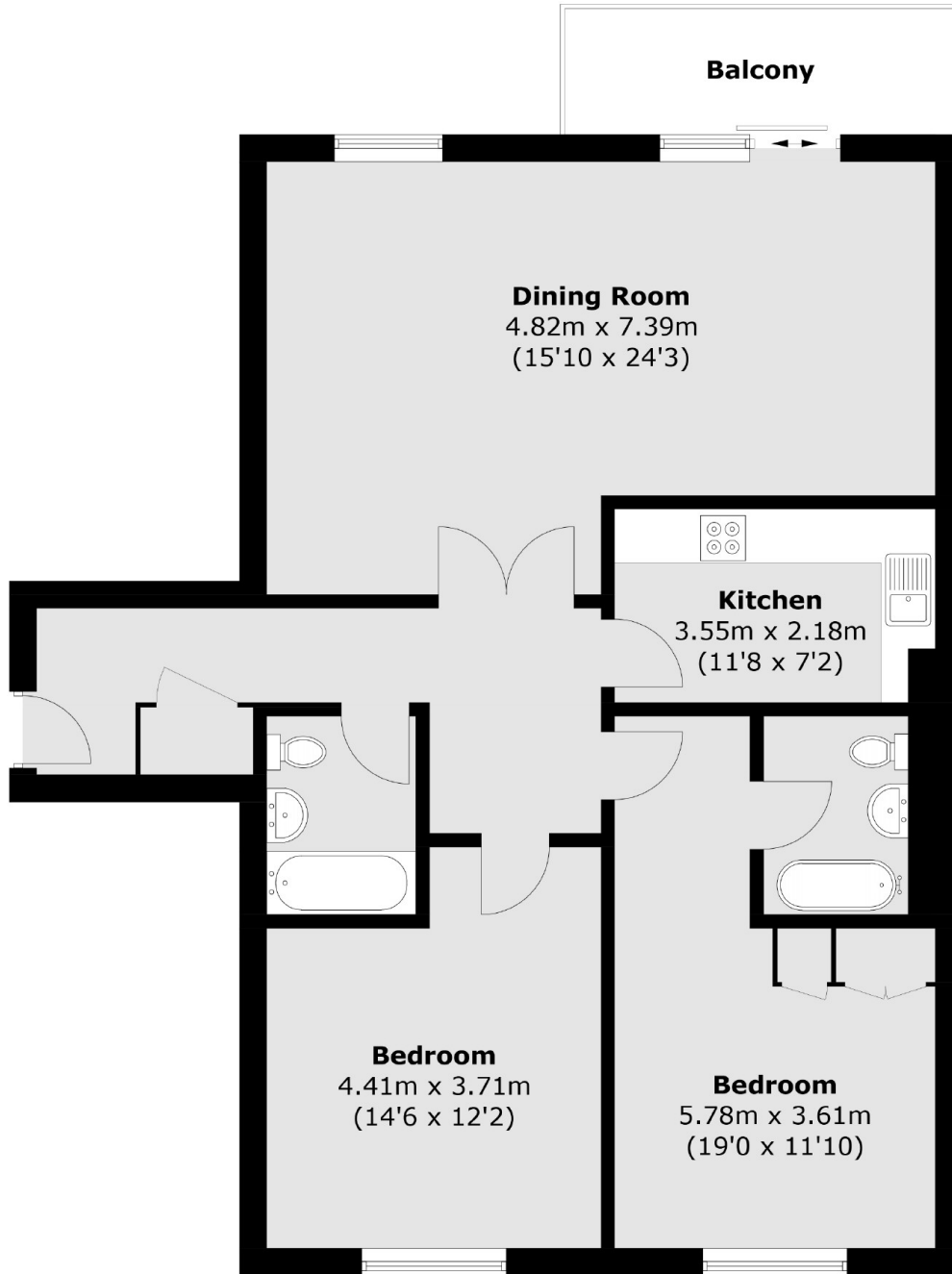
A two bedroom home offering 1,015 Sq. Ft of ample living space offering river views and resident leisure facilities. Features to include gated access, allocated parking, two bathrooms and concierge service.

Homer Drive is just a short walk from either Mudchute or Island Gardens DLR Stations allowing for quick and easy access into Canary Wharf, The City and Greenwich. The Thames Uber Boat service is also available nearby at Canary Wharf / Masthouse Terrace.

### Features

Offers in excess of £600,000  
Private Balcony  
River Views  
Two Double Bedrooms  
Two Bathrooms  
Concierge Service

Homer Drive,  
London, E14



## Sixth Floor

Total area (approx.): 94.2 sq.m (1,014 sq.ft)  
Balcony: 6.1 sq.m (66 sq.ft)

**Dexters**

Canary Wharf  
39 Westferry Road  
London  
E14 8JH  
Sales  
020 7517 1199

Energy Rating: C. We aim to make our particulars both accurate and reliable. However they are not guaranteed; nor do they form part of an offer or contract. If you require clarification on any points then please contact us, especially if you're traveling some distance to view. Please note that appliances and heating systems have not been tested and therefore no warranties can be given as to their good working order.

 **RICS** | Regulated  
Estate Agent  
and Letting Agent

dexters.co.uk