



Hale Street, E14 £450,000

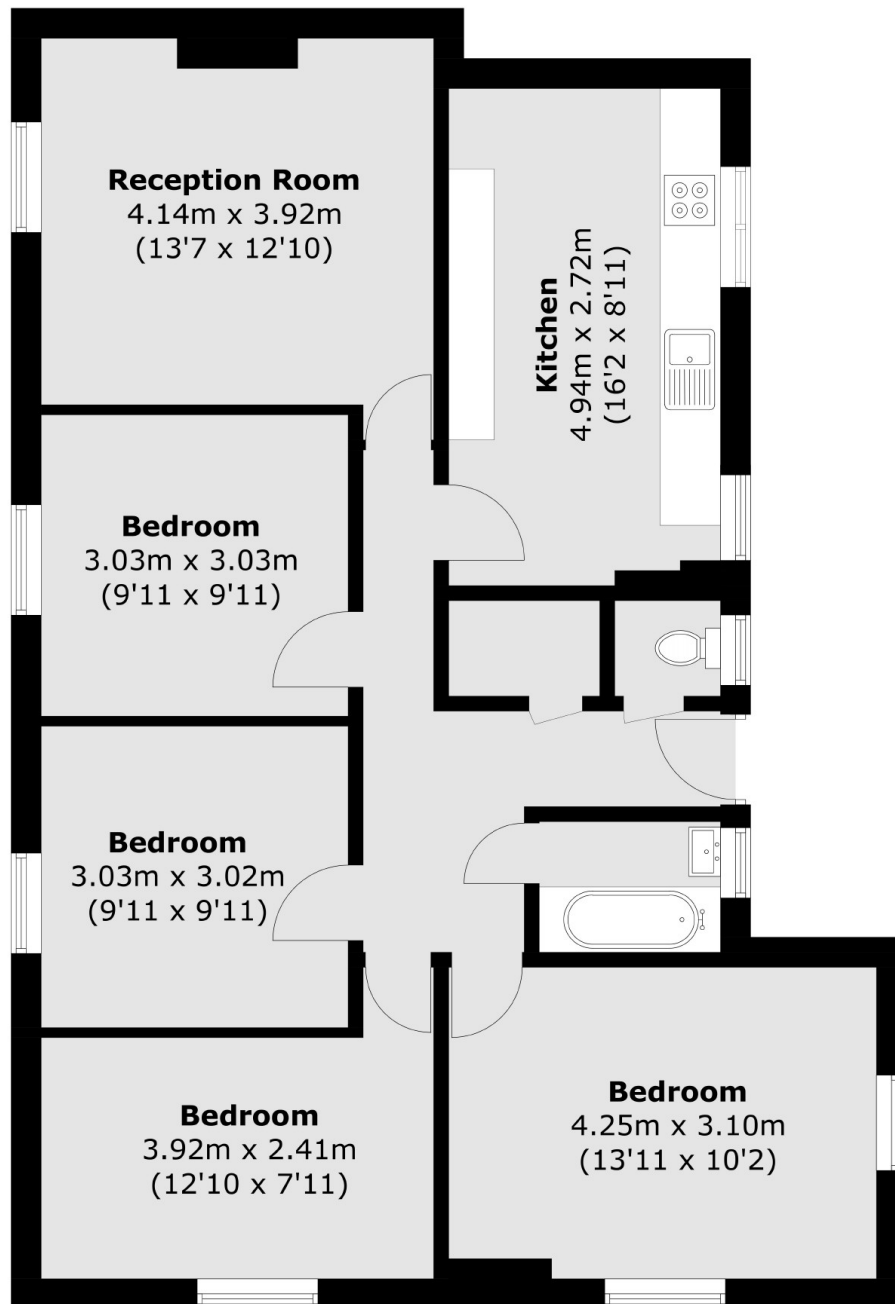
This spacious four bedroom apartment is set in an imposing block offering ample living space throughout including a sizeable reception room, four double bedrooms and a well-maintained kitchen with space to dine.

The property is ideally located close to the amenities on East India Dock Road while transport links to the City and West End are also nearby. The nearest station is Poplar (DLR). For motorists, easy access is provided to the north and The East.

Features

935.3 Sq.Ft
Four Bedrooms
Low Rise Block
Low Service Charge
£10 Ground Rent
E14 Location

Hale Street,
London, E14



Total area (approx.): 86.9 sq. m (935.3 sq. ft)