

South Quay Square, E14 £750,000

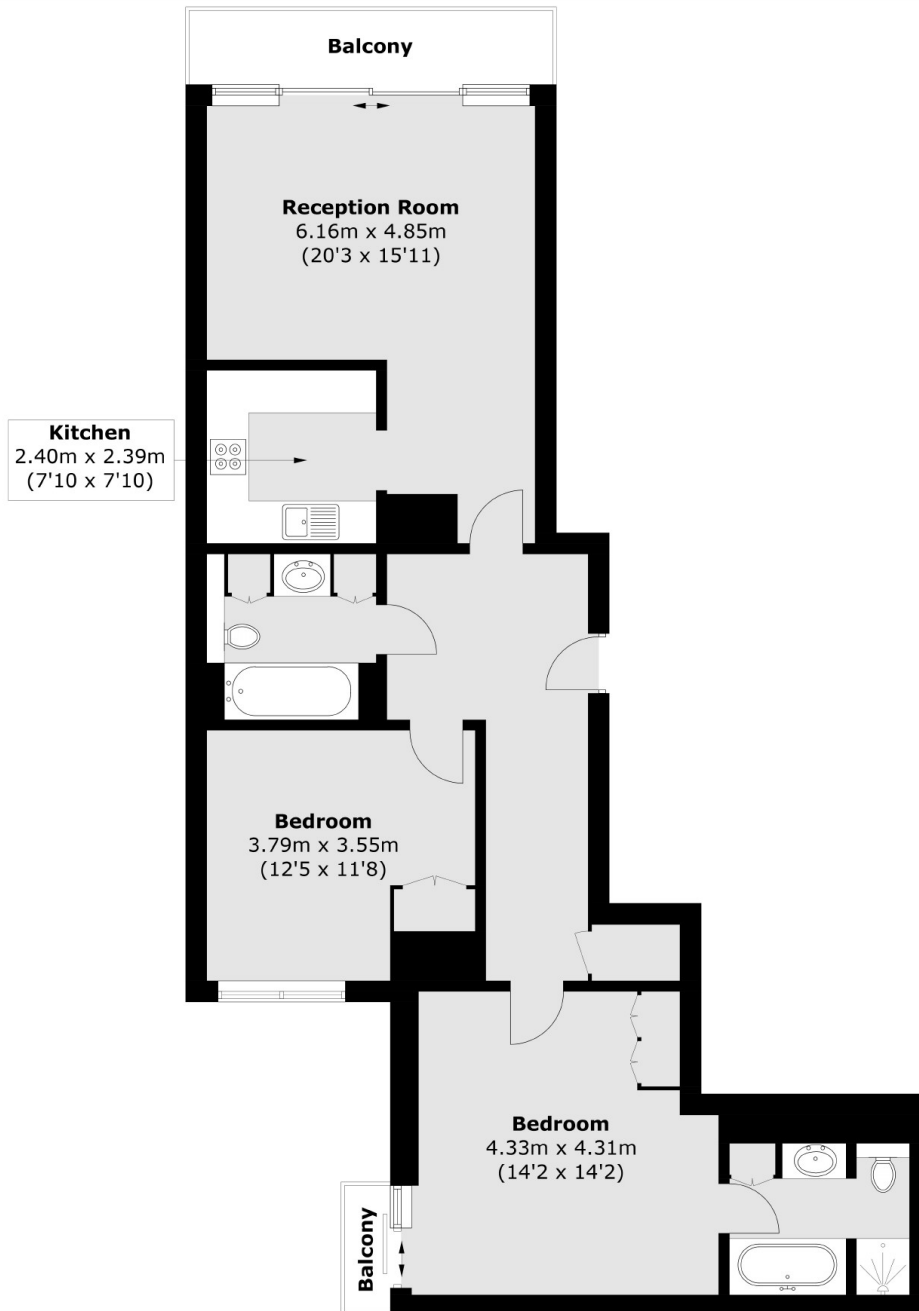
Offering 955.8 Sq.Ft of ample living space is this two bedroom home located in the sought after Discovery Dock East Apartments. Features to include balcony with dock and Canary Wharf views, re-fitted kitchen, additional balcony off master bedroom, wooden flooring and resident leisure facilities.

Discovery Dock is ideally located for Canary Wharf. The Jubilee and Elizabeth lines are just a short distance away which provides for good links to The City.

Features

955.8 Sq.Ft
Canary Wharf and Dock Views
71 Sq.Ft Balcony
24hr Concierge
Re-Fitted Kitchen
Allocated Parking

South Quay Square, London, E14



Total area (approx.): 88.8 sq. m (955.8 sq. ft)
Balcony : 6.6 sq. m (71.0 sq. ft)

Dexters

Canary Wharf
39 Westferry Road
London
E14 8JH
Sales
020 7517 1199

Energy Rating: B. We aim to make our particulars both accurate and reliable. However they are not guaranteed; nor do they form part of an offer or contract. If you require clarification on any points then please contact us, especially if you're traveling some distance to view. Please note that appliances and heating systems have not been tested and therefore no warranties can be given as to their good working order.

 **RICS** | Regulated
Estate Agent
and Letting Agent

dexters.co.uk